

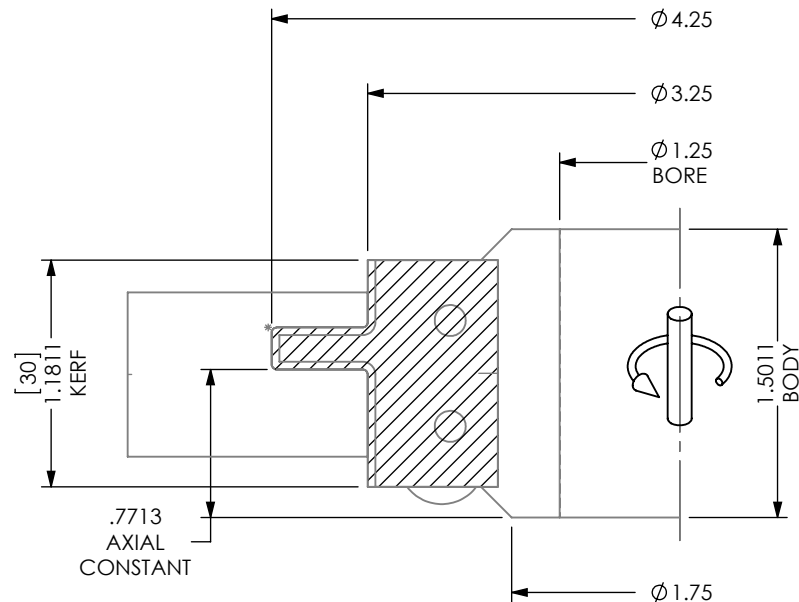
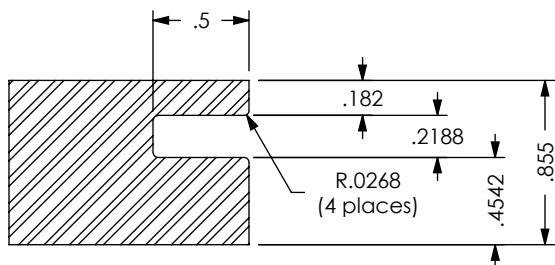
TEETH: 3  
HOOK: 10°  
SHEAR: 0°  
TIPS: INSERT  
PA: N/A

MAX RPM: 14,000

DWG: 4-01-2225500

A.K.A. #: N/A

# CUTTER BODY #4-01-2225500 TO RUN EXISTING INSERT #4-10-2225500



HALL MANUFACTURING DWG: 4-01-2225500

ATTN: \_\_\_\_\_ DATE: \_\_\_\_\_ PO#: \_\_\_\_\_

**CUSTOM TOOLING MUST HAVE CUSTOMER APPROVAL PRIOR TO THE START OF MANUFACTURING. PLEASE REVIEW THIS DRAWING FOR ACCURACY, INCLUDING ROTATION, AND FAX A SIGNED AND DATED COPY. PRODUCTION WILL BEGIN UPON RECEIPT OF APPROVED DRAWING.**

APPROVED BY: \_\_\_\_\_ DATE: \_\_\_\_\_

DATE:  
1/30/15

DWN BY:  
R.W.B.

REV.  
+

SHEET 1 OF 4

