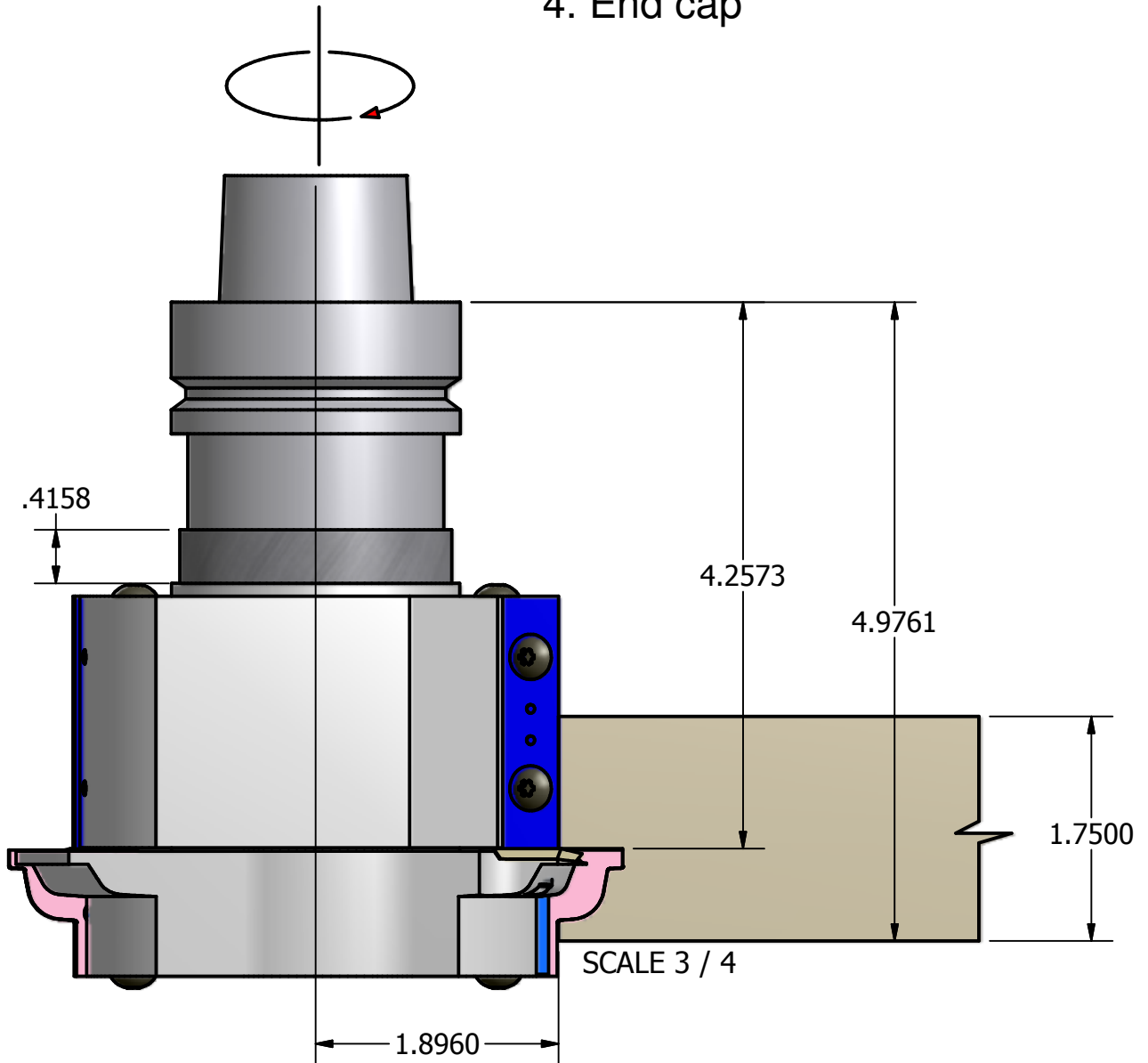


GEOMETRY
2 Wing(s)
10° Hook
5° Shear

The minor diameter is 3.792"

Setup for profile B 1.75" wood

1. Spacer .4158" thick
2. Body 338A with 50 x 12 x 1.5 indexable insert
3. Body 338B with insert 333
4. End cap



THIS DRAWING IS PROPERTY OF EW TOOLING, INC. AND MUST NOT BE USED IN ANY WAY DETRIMENTAL TO OUR INTERESTS

182 Hall Manufacturing
Lacey Door & Millwork

E.W. TOOLING, INC.
Cutting tools for the woodworking industry

PARTS LIST DRAWING

Originate: 12/09

Last edit: 12/14/09

EW P/N: 182-338

Tips: Carbide inserts

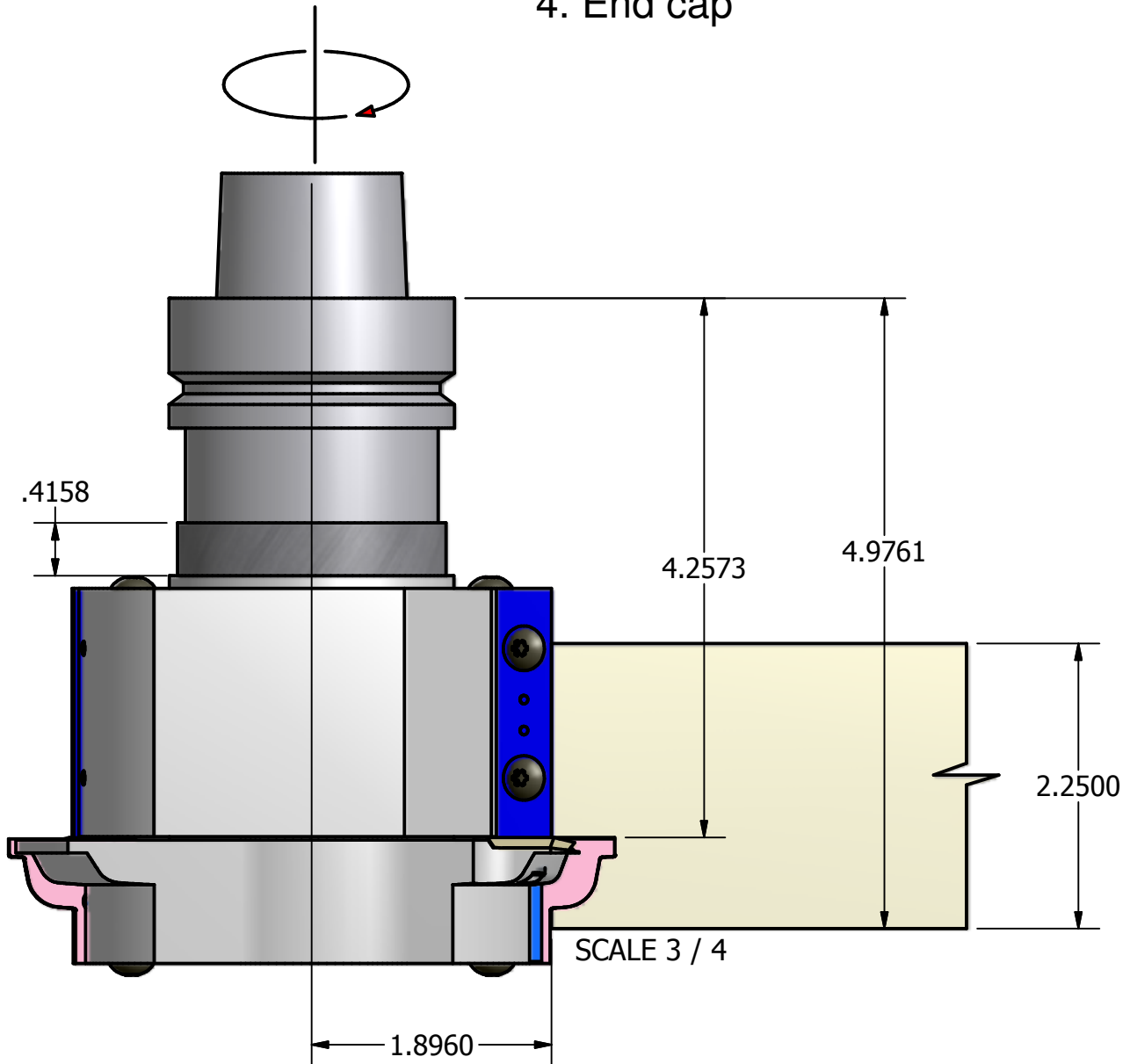
Cust P/N: Profile B for 1.75" wood

GEOMETRY	
2	Wing(s)
10°	Hook
5°	Shear

The minor diameter is 3.792"

Setup for profile B 1.75" wood

1. Spacer .4158" thick
2. Body 338A with 50 x 12 x 1.5 indexable insert
3. Body 338B with insert 333
4. End cap



THIS DRAWING IS PROPERTY OF EW TOOLING, INC. AND MUST NOT BE USED IN ANY WAY DETRIMENTAL TO OUR INTERESTS

182 Hall Manufacturing
Lacey Door & Millwork

E.W. TOOLING, INC.
Cutting tools for the woodworking industry

PARTS LIST DRAWING

Originate: 12/09

Last edit: 12/14/09

EW P/N: 182-338

Tips: Carbide inserts

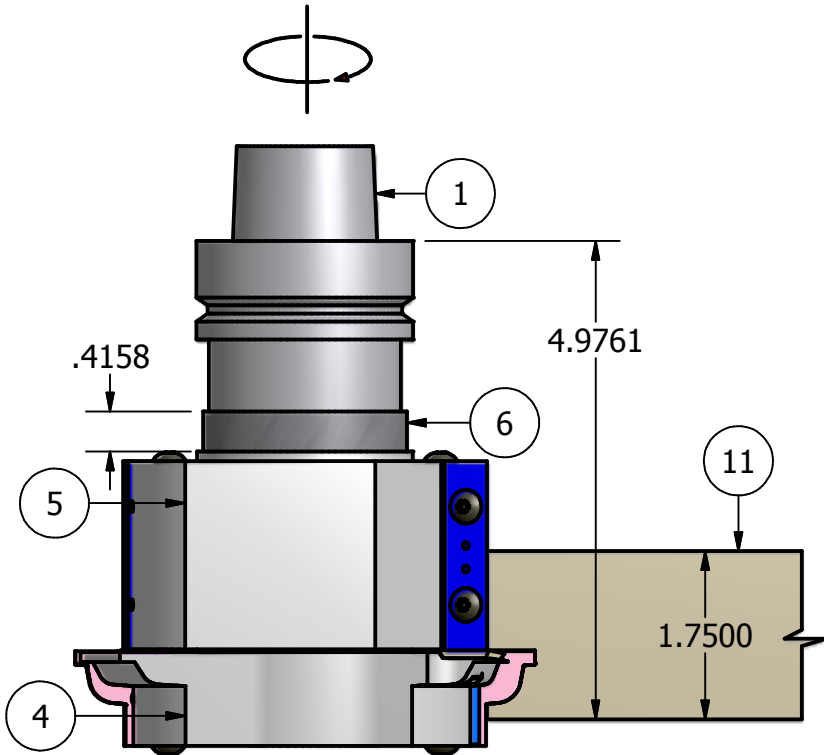
Cust P/N: Profile B for 2.25" wood

GEOMETRY	
2	Wing(s)
25	Hook
0	Shear

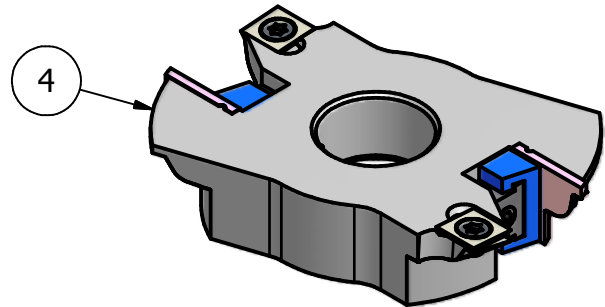
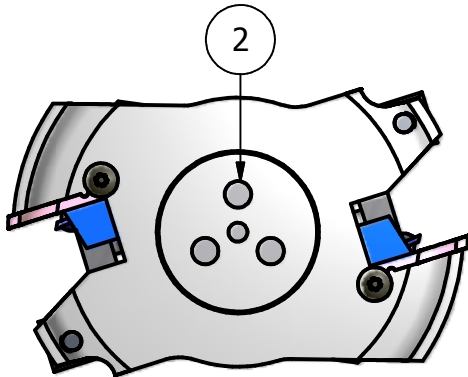
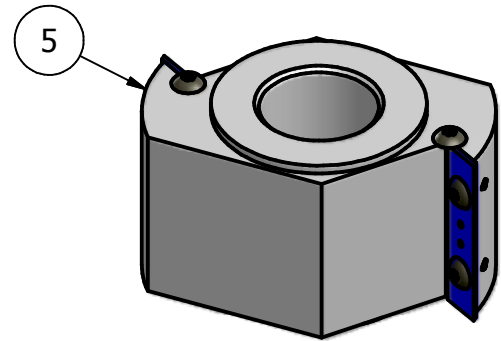
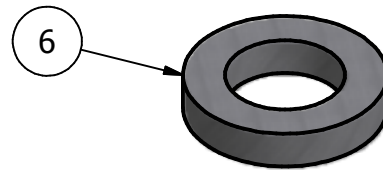
The minor diameter is 3.792"

Parts List		
ITEM	QTY	PART NUMBER
1	1	Lacey 1.250 toolholder
2	1	Lacey Toolholder Small Endcap
4	1	182-338 CW body B assembly
5	1	182-338 CW body A assembly
6	1	182-338 top spacer
11	1	Cope B 1.75" wood

Part lists for assemblies A & B are on another sheet



SCALE 1 / 2



THIS DRAWING IS PROPERTY OF EW TOOLING, INC. AND MUST NOT BE USED IN ANY WAY DETRIMENTAL TO OUR INTERESTS

182 Hall Manufacturing
Lacey Door & Millwork

E.W. TOOLING, INC.

Cutting tools for the woodworking industry

Approved by: _____

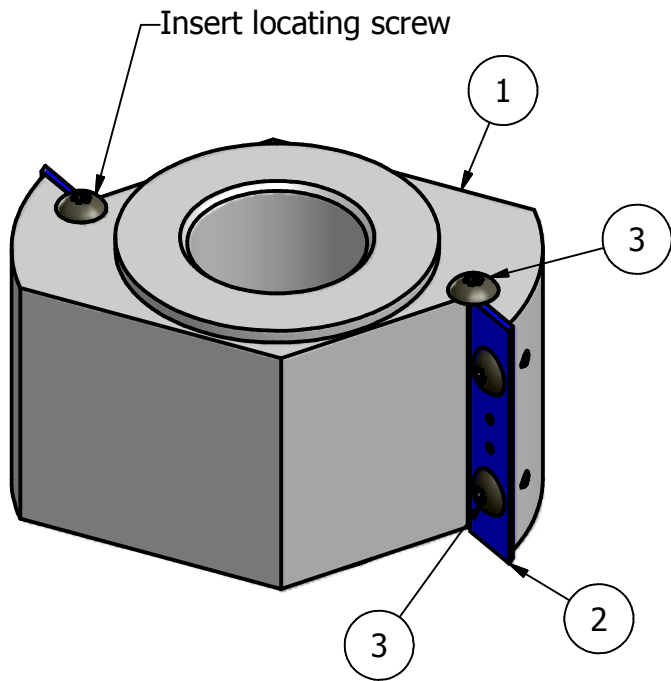
Originate: 10/27/09

Last edit: 12/8/09

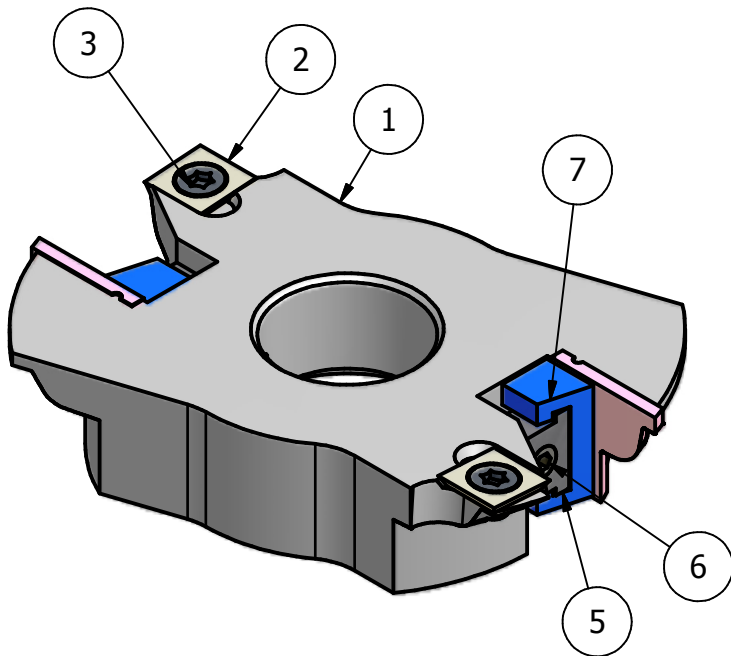
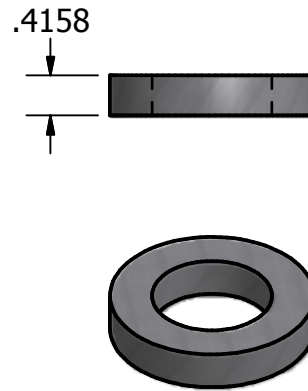
EW P/N: 182-338

Tips: Carbide inserts

Cust P/N: Profile B for 1.75" wood



Parts List		
ITEM	QTY	PART NUMBER
1	1	182-338 CW body A
2	2	50 x 12x 1.5 35deg
3	6	3.5 mm X 6mm BH



Parts List		
ITEM	QTY	PART NUMBER
1	1	182-338 CW body B
2	2	14x14x2
3	2	6x10-Flat Head Screw Mod Lght
5	2	EW #1 clamp
6	2	3125x24x1 clamp screw
7	2	EW #1 wedge
8	2	3.5 mm X 6mm BH
9	2	182-333 insert,body B prof.B

#8 is the insert locating screw on the bottom of the body

THIS DRAWING IS PROPERTY OF EW TOOLING, INC. AND MUST NOT BE USED IN ANY WAY DETRIMENTAL TO OUR INTERESTS

182 Hall Manufacturing
Lacey Door & Millwork
E.W. TOOLING, Inc.
Cutting tools for the woodworking industry

Approved by: _____

Originate: 10/27/09

Last edit: 11/19/09

EW P/N: 182-338

Tips: Carbide inserts

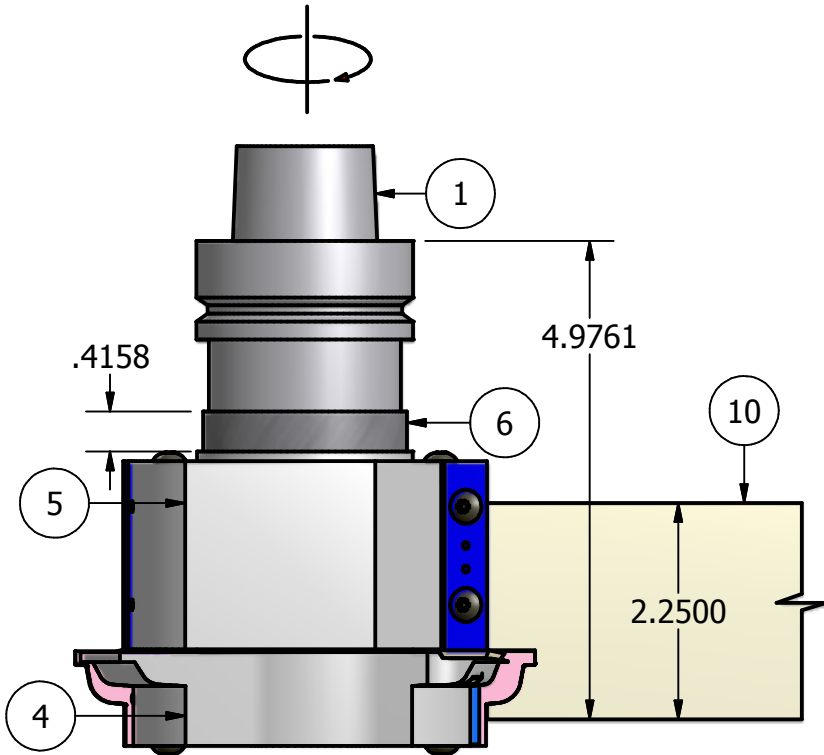
Cust P/N: Profile B for 1.75" & 2.25" wood

GEOMETRY	
2	Wing(s)
25	Hook
0	Shear

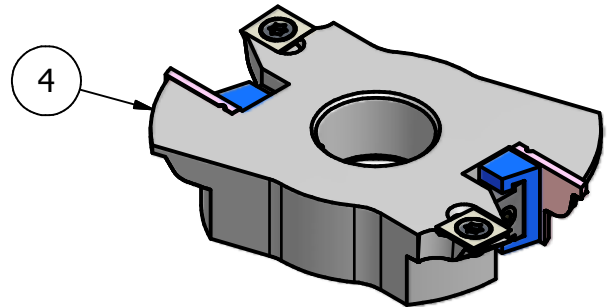
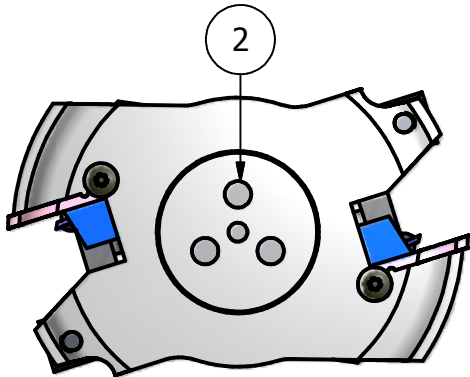
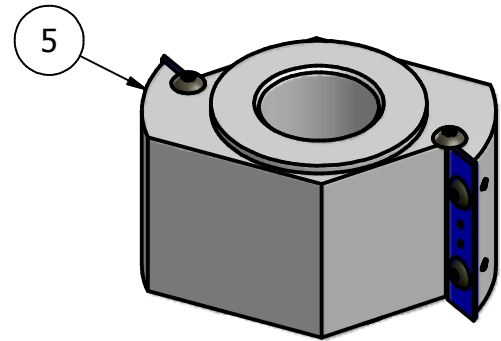
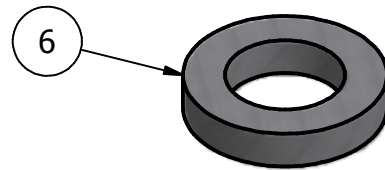
The minor diameter is 3.792"

Parts List		
ITEM	QTY	PART NUMBER
1	1	Lacey 1.250 toolholder
2	1	Lacey Toolholder Small Endcap
4	1	182-338 CW body B assembly
5	1	182-338 CW body A assembly
6	1	182-338 top spacer
10	1	Cope B 2.25" wood

Part lists for assemblies A & B are on another sheet



SCALE 1 / 2



THIS DRAWING IS PROPERTY OF EW TOOLING, INC. AND MUST NOT BE USED IN ANY WAY DETRIMENTAL TO OUR INTERESTS

182 Hall Manufacturing
Lacey Door & Millwork

E.W. TOOLING, INC.

Cutting tools for the woodworking industry

Approved by: _____

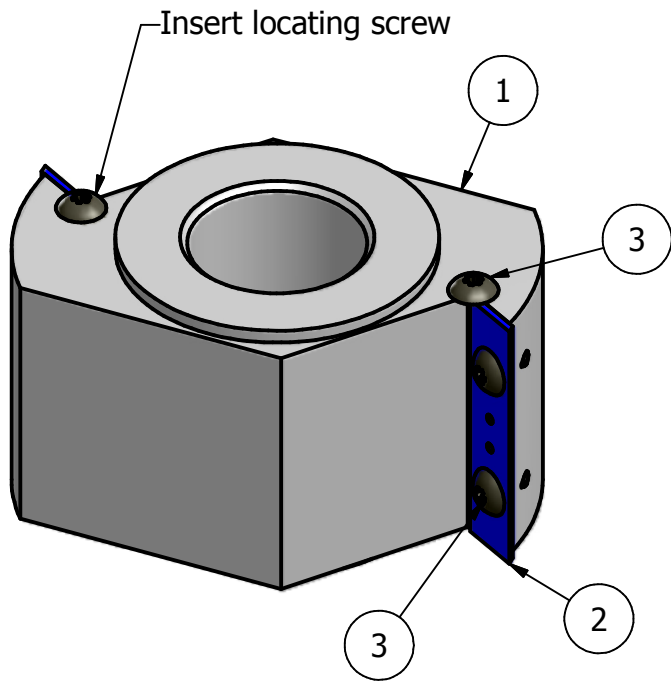
Originate: 10/27/09

Last edit: 12/8/09

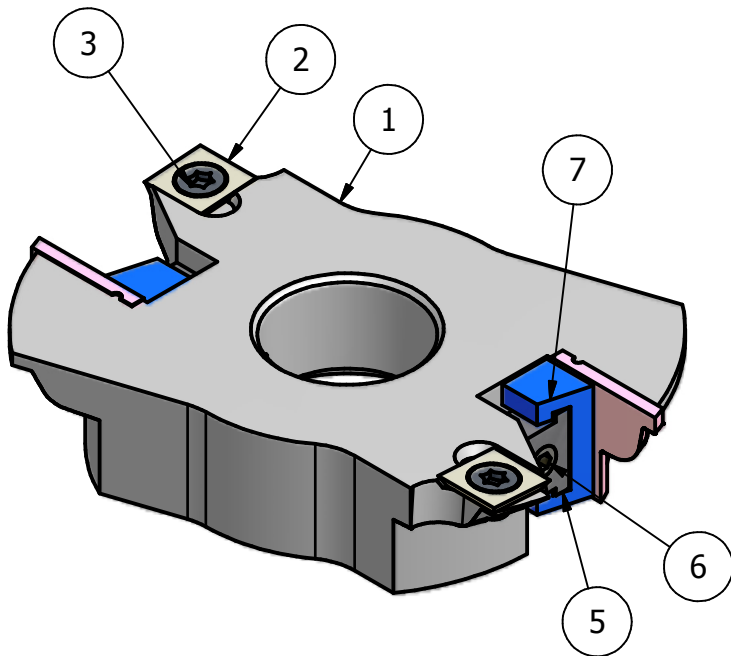
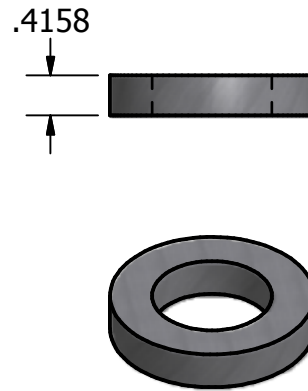
EW P/N: 182-338

Tips: Carbide inserts

Cust P/N: Profile B for 2.25" wood



Parts List		
ITEM	QTY	PART NUMBER
1	1	182-338 CW body A
2	2	50 x 12x 1.5 35deg
3	6	3.5 mm X 6mm BH



Parts List		
ITEM	QTY	PART NUMBER
1	1	182-338 CW body B
2	2	14x14x2
3	2	6x10-Flat Head Screw Mod Lght
5	2	EW #1 clamp
6	2	3125x24x1 clamp screw
7	2	EW #1 wedge
8	2	3.5 mm X 6mm BH
9	2	182-333 insert,body B prof.B

#8 is the insert locating screw on the bottom of the body

THIS DRAWING IS PROPERTY OF EW TOOLING, INC. AND MUST NOT BE USED IN ANY WAY DETRIMENTAL TO OUR INTERESTS

182 Hall Manufacturing
Lacey Door & Millwork
E.W. TOOLING, Inc.
Cutting tools for the woodworking industry

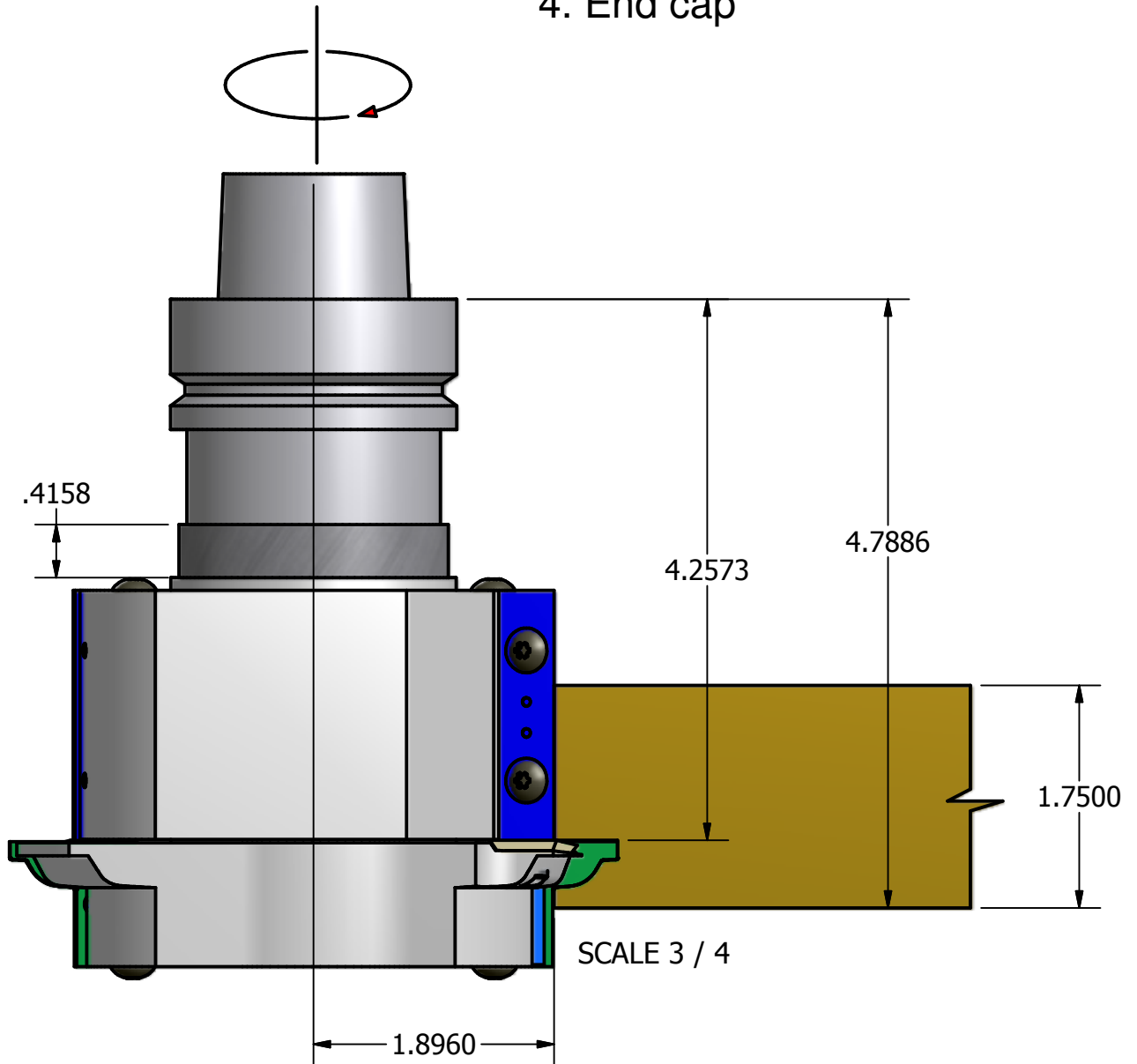
Approved by: _____
 Originate: 10/27/09 Last edit: 11/19/09
 EW P/N: 182-338 Tips: Carbide inserts
 Cust P/N: Profile B for 1.75" & 2.25" wood

GEOMETRY	
2	Wing(s)
10°	Hook
5°	Shear

The minor diameter is 3.792"

Setup for profile C 1.75" wood

1. Spacer .4158" thick
2. Body 338A with 50 x 12 x 1.5 indexable insert
3. Body 338B with insert 344
4. End cap



THIS DRAWING IS PROPERTY OF EW TOOLING, INC. AND MUST NOT BE USED IN ANY WAY DETRIMENTAL TO OUR INTERESTS

182 Hall Manufacturing
Lacey Door & Millwork

E.W. TOOLING, INC.
Cutting tools for the woodworking industry

PARTS LIST DRAWING

Originate: 12/09

Last edit: 12/14/09

EW P/N: 182-338

Tips: Carbide inserts

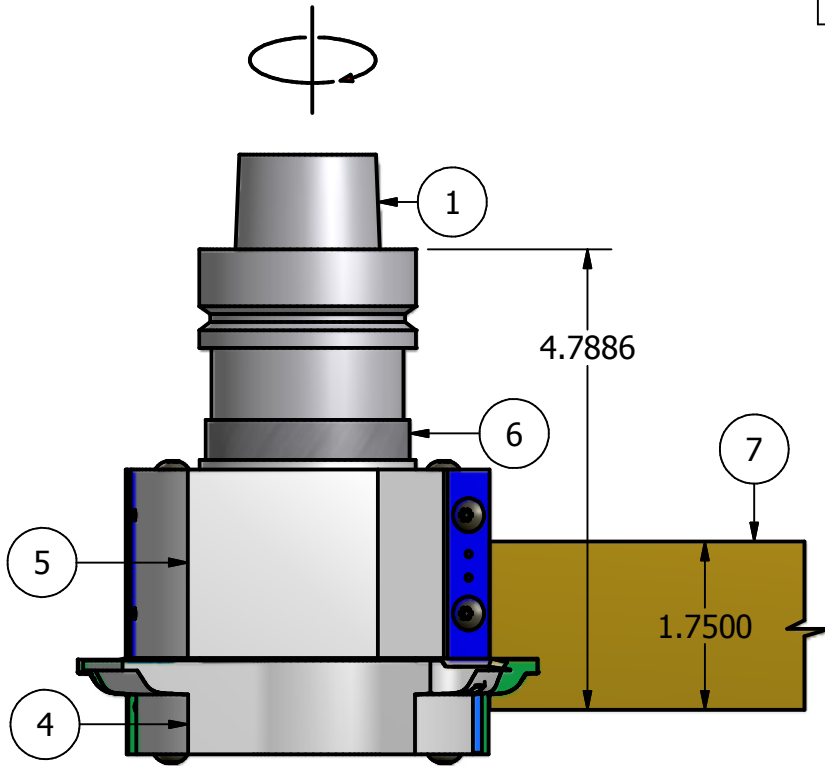
Cust P/N: Profile C for 1.75" wood

GEOMETRY	
2	Wing(s)
25	Hook
0	Shear

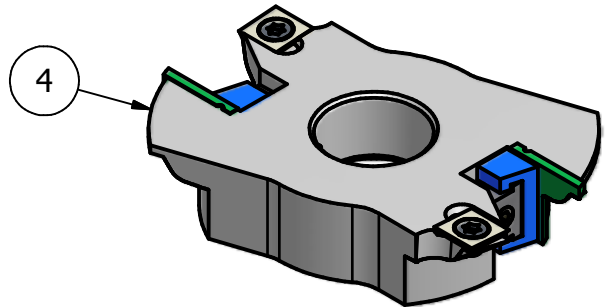
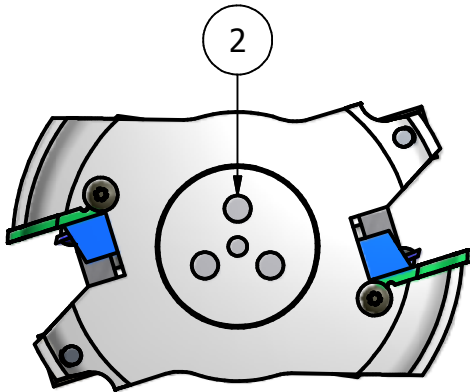
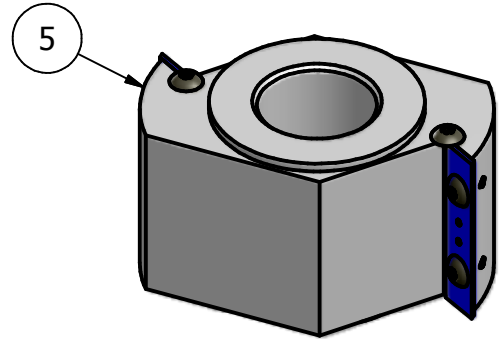
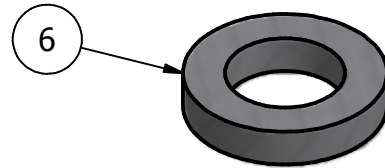
The minor diameter is 3.792"

Parts List		
ITEM	QTY	PART NUMBER
1	1	Lacey 1.250 toolholder
2	1	Lacey Toolholder Small Endcap
4	1	182-338 CW body B assembly
5	1	182-338 CW body A assembly
6	1	182-338 1.750 spacer
7	1	Cope C 1.75" wood

Part lists for assemblies A & B are on another sheet



SCALE 1 / 2



THIS DRAWING IS PROPERTY OF EW TOOLING, INC. AND MUST NOT BE USED IN ANY WAY DETRIMENTAL TO OUR INTERESTS

182 Hall Manufacturing
Lacey Door & Millwork

E.W. TOOLING, Inc.

Cutting tools for the woodworking industry

Approved by: _____

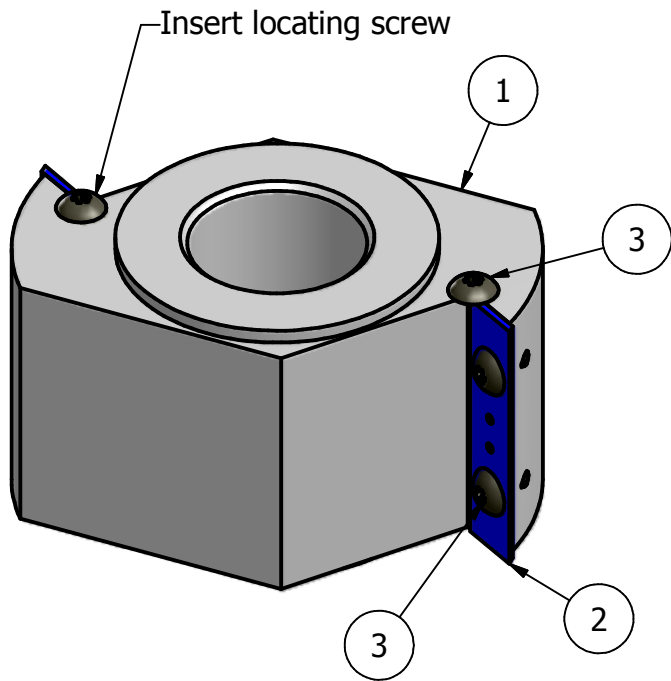
Originate: 10/27/09

Last edit: 12/8/09

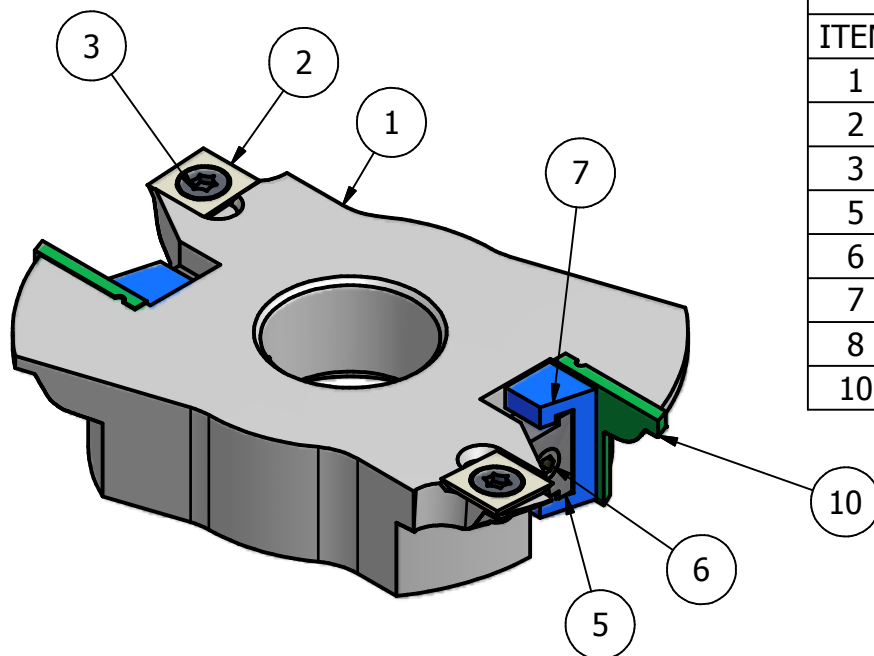
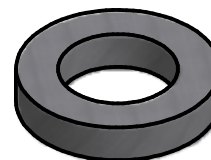
EW P/N: 182-338

Tips: Carbide inserts

Cust P/N: Profile C for 1.75" wood



Parts List		
ITEM	QTY	PART NUMBER
1	1	182-338 CW body A
2	2	50 x 12x 1.5 35deg
3	6	3.5 mm X 6mm BH



Parts List		
ITEM	QTY	PART NUMBER
1	1	182-338 CW body B
2	2	14x14x2
3	2	6x10-Flat Head Screw Mod Lght
5	2	EW #1 clamp
6	2	3125x24x1 clamp screw
7	2	EW #1 wedge
8	2	3.5 mm X 6mm BH
10	2	182-344 insert,body B prof.C

#8 is the insert locating screw on the bottom of the body

THIS DRAWING IS PROPERTY OF EW TOOLING, INC. AND MUST NOT BE USED IN ANY WAY DETRIMENTAL TO OUR INTERESTS

182 Hall Manufacturing
Lacey Door & Millwork
E.W. TOOLING, INC.
Cutting tools for the woodworking industry

Approved by: _____

Originate: 10/27/09

Last edit: 11/19/09

EW P/N: 182-338

Tips: Carbide inserts

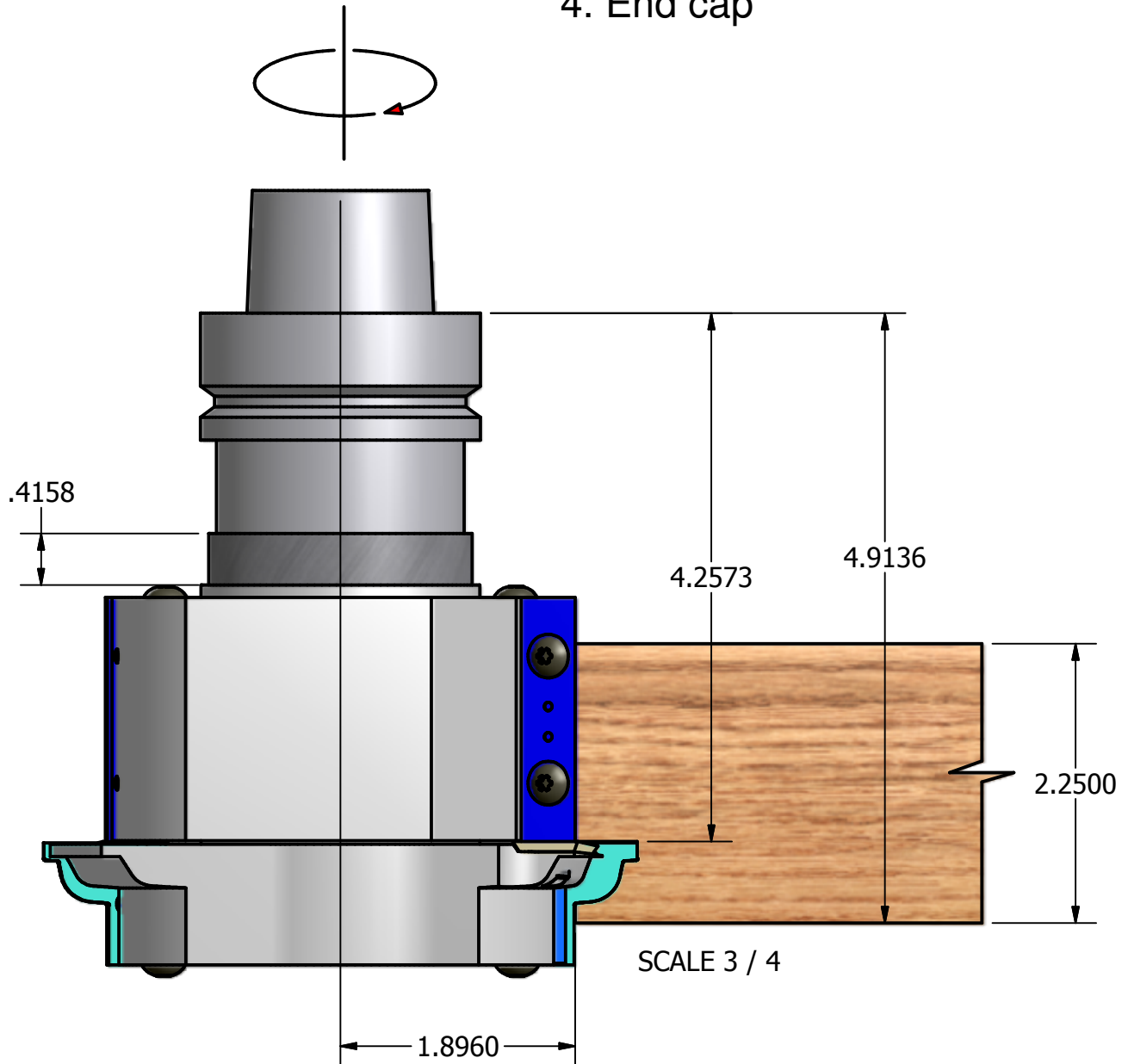
Cust P/N: Profile C for 1.75" wood

GEOMETRY	
2	Wing(s)
10°	Hook
5°	Shear

The minor diameter is 3.792"

Setup for profile D 2.25" wood

1. Spacer .4158" thick
2. Body 338A with 50 x 12 x 1.5 indexable insert
3. Body 338B with insert 347
4. End cap



THIS DRAWING IS PROPERTY OF EW TOOLING, INC. AND MUST NOT BE USED IN ANY WAY DETRIMENTAL TO OUR INTERESTS

182 Hall Manufacturing
Lacey Door & Millwork

E.W. TOOLING, INC.
Cutting tools for the woodworking industry

PARTS LIST DRAWING

Originate: 12/09

Last edit: 12/14/09

EW P/N: 182-338

Tips: Carbide inserts

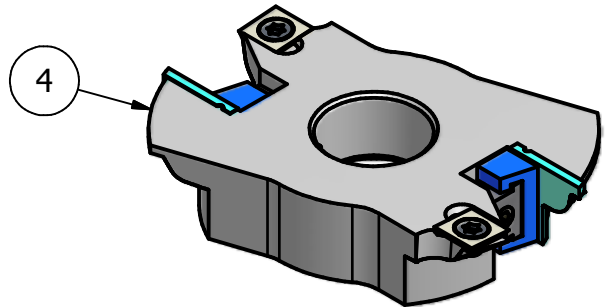
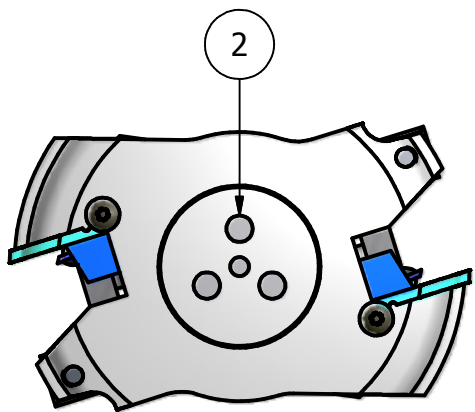
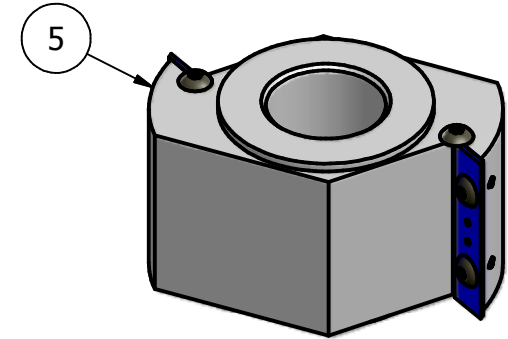
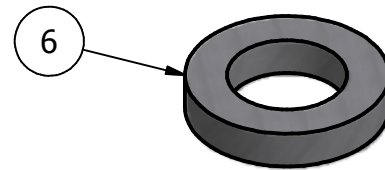
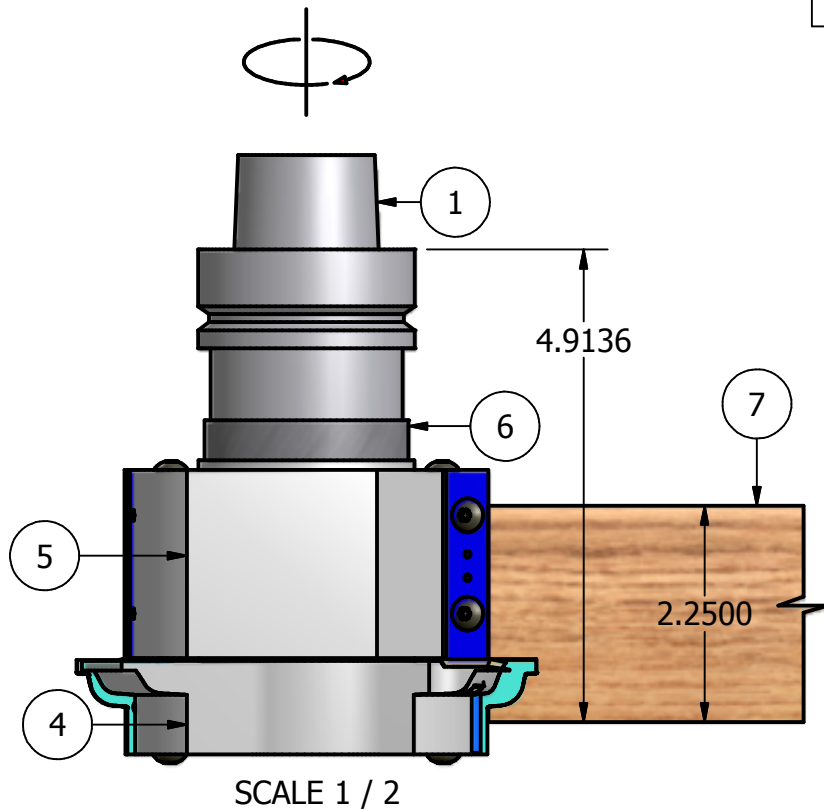
Cust P/N: Profile D for 2.25" wood

GEOMETRY	
2	Wing(s)
25	Hook
0	Shear

The minor diameter is 3.792"

Parts List		
ITEM	QTY	PART NUMBER
1	1	Lacey 1.250 toolholder
2	1	Lacey Toolholder Small Endcap
4	1	182-338 CW body B assembly
5	1	182-338 CW body A assembly
6	1	182-338 1.750 spacer
7	1	Cope D 2.25" wood

Part lists for assemblies A & B are on another sheet



THIS DRAWING IS PROPERTY OF EW TOOLING, INC. AND MUST NOT BE USED IN ANY WAY DETRIMENTAL TO OUR INTERESTS

182 Hall Manufacturing
Lacey Door & Millwork
E.W. TOOLING, Inc.
Cutting tools for the woodworking industry

Approved by: _____

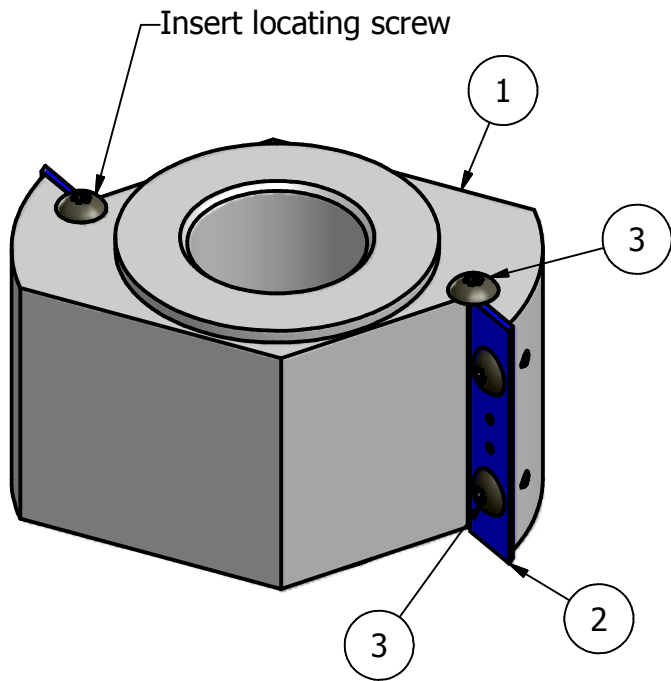
Originate: 10/27/09

Last edit: 12/8/09

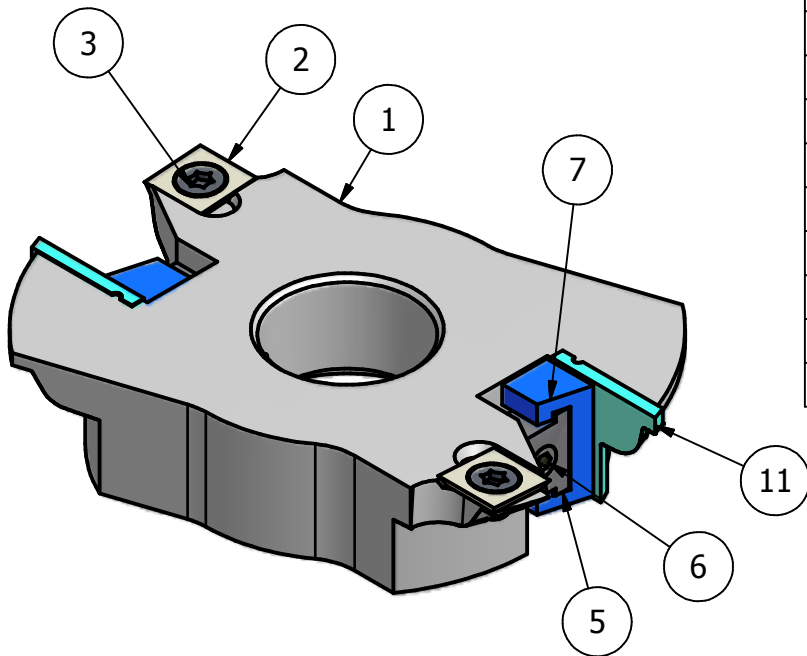
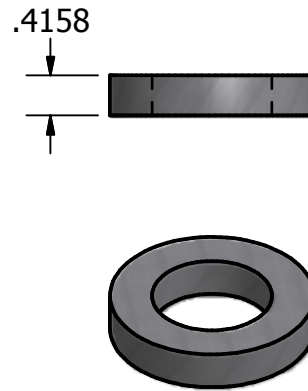
EW P/N: 182-338

Tips: Carbide inserts

Cust P/N: Profile D for 2.25" wood



Parts List		
ITEM	QTY	PART NUMBER
1	1	182-338 CW body A
2	2	50 x 12x 1.5 35deg
3	6	3.5 mm X 6mm BH



Parts List		
ITEM	QTY	PART NUMBER
1	1	182-338 CW body B
2	2	14x14x2
3	2	6x10-Flat Head Screw Mod Lght
5	2	EW #1 clamp
6	2	3125x24x1 clamp screw
7	2	EW #1 wedge
8	2	3.5 mm X 6mm BH
11	2	182-347 insert,body B prof.D

#8 is the insert locating screw on the bottom of the body

THIS DRAWING IS PROPERTY OF EW TOOLING, INC. AND MUST NOT BE USED IN ANY WAY DETRIMENTAL TO OUR INTERESTS

182 Hall Manufacturing
Lacey Door & Millwork
E.W. TOOLING, INC.
Cutting tools for the woodworking industry

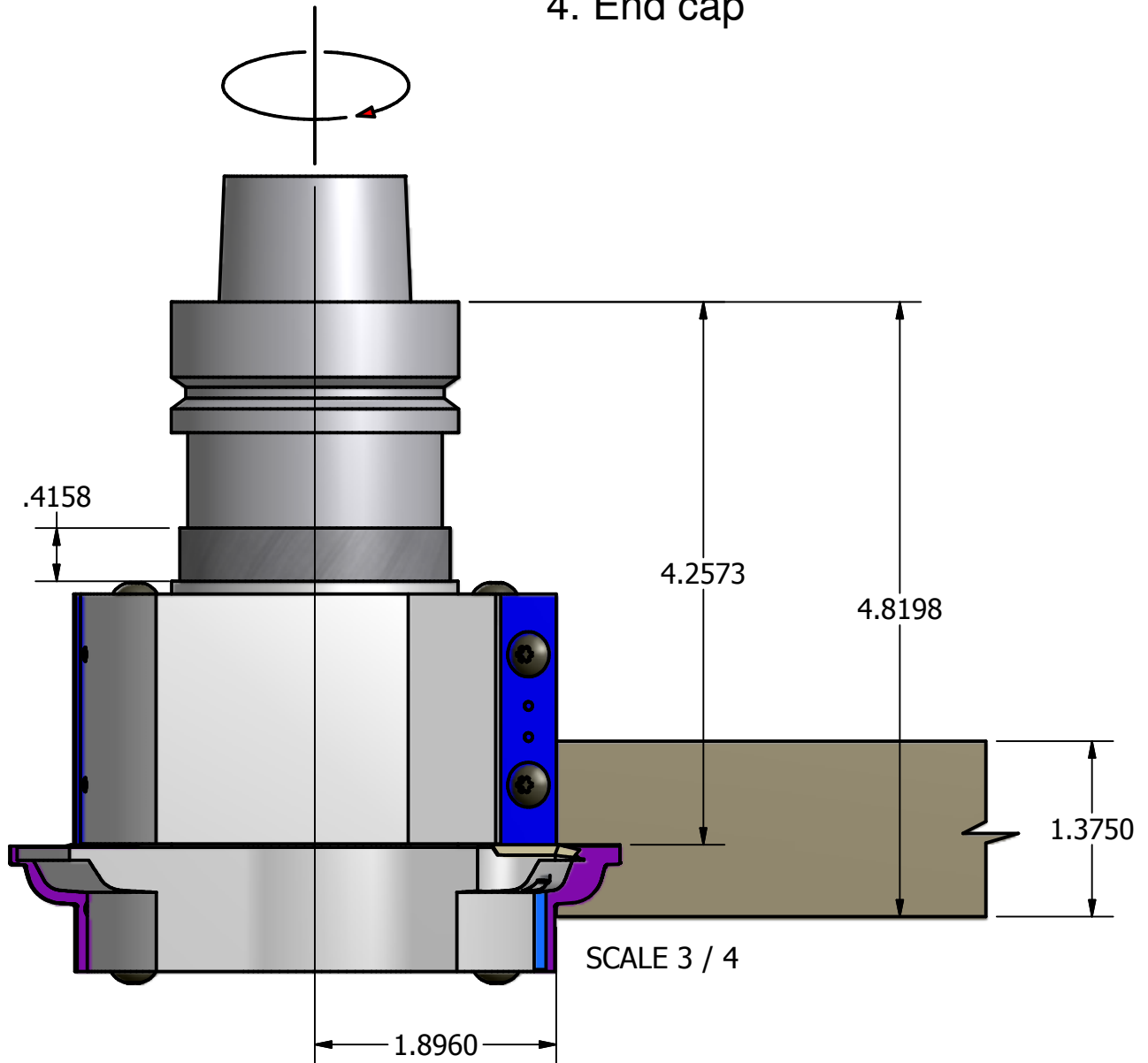
Approved by: _____
Originate: 10/27/09 Last edit: 11/19/09
EW P/N: 182-338 Tips: Carbide inserts
Cust P/N: Profile D for 2.25" wood

GEOMETRY	
2	Wing(s)
10°	Hook
5°	Shear

Setup for profile E 1.375" wood

1. Spacer .4158" thick
2. Body 338A with 50 x 12 x 1.5 indexable insert
3. Body 338B with insert 339
4. End cap

The minor diameter is 3.792"



THIS DRAWING IS PROPERTY OF EW TOOLING, INC. AND MUST NOT BE USED IN ANY WAY DETRIMENTAL TO OUR INTERESTS

182 Hall Manufacturing
Lacey Door & Millwork

E.W. TOOLING, INC.
Cutting tools for the woodworking industry

PARTS LIST DRAWING

Originate: 12/09

Last edit: 12/14/09

EW P/N: 182-338

Tips: Carbide inserts

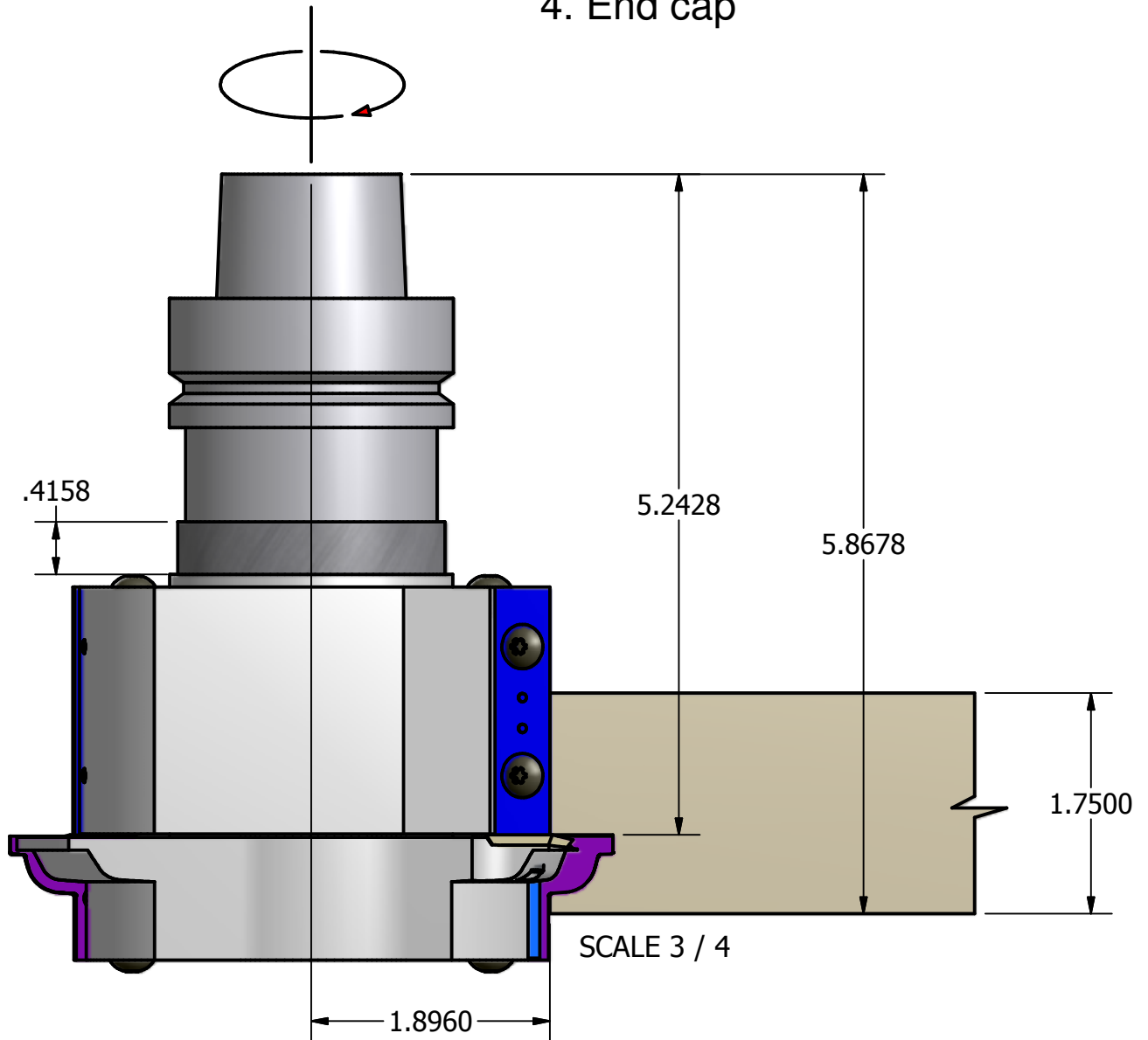
Cust P/N: Profile E for 1.375" wood

GEOMETRY
2 Wing(s)
10° Hook
5° Shear

Setup for profile E 1.75" wood

1. Spacer .4158" thick
2. Body 338A with 50 x 12 x 1.5 indexable insert
3. Body 338B with insert 339
4. End cap

The minor diameter is 3.792"



THIS DRAWING IS PROPERTY OF EW TOOLING, INC. AND MUST NOT BE USED IN ANY WAY DETRIMENTAL TO OUR INTERESTS

182 Hall Manufacturing
Lacey Door & Millwork

E.W. TOOLING, INC.
Cutting tools for the woodworking industry

PARTS LIST DRAWING

Originate: 12/09

Last edit: 12/14/09

EW P/N: 182-338

Tips: Carbide inserts

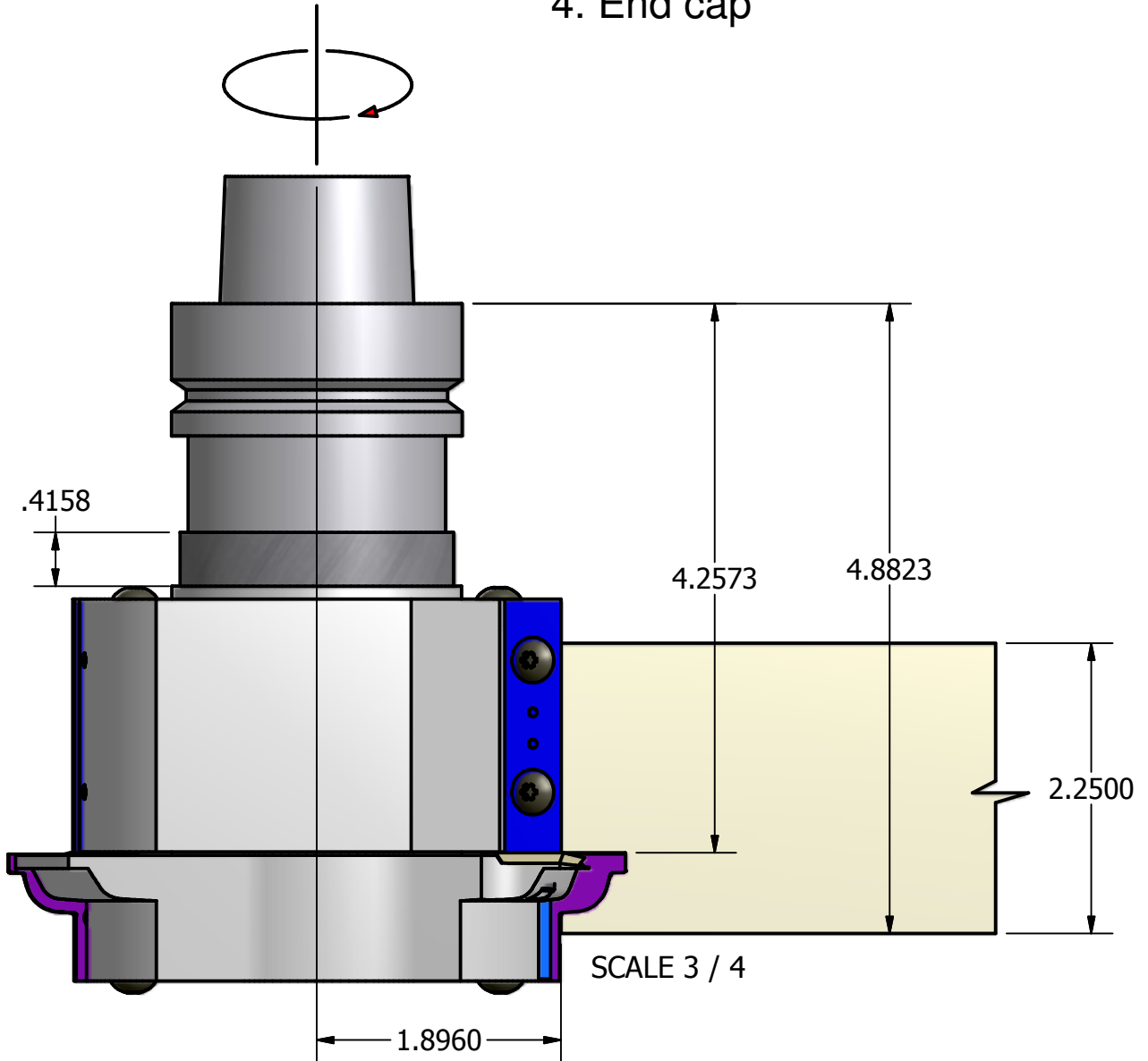
Cust P/N: Profile E for 1.75" wood

GEOMETRY
2 Wing(s)
10° Hook
5° Shear

Setup for profile E 2.25" wood

1. Spacer .4158" thick
2. Body 338A with 50 x 12 x 1.5 indexable insert
3. Body 338B with insert 339
4. End cap

The minor diameter is 3.792"



THIS DRAWING IS PROPERTY OF EW TOOLING, INC. AND MUST NOT BE USED IN ANY WAY DETRIMENTAL TO OUR INTERESTS

182 Hall Manufacturing
Lacey Door & Millwork

E.W. TOOLING, INC.
Cutting tools for the woodworking industry

PARTS LIST DRAWING

Originate: 12/09

Last edit: 12/14/09

EW P/N: 182-338

Tips: Carbide inserts

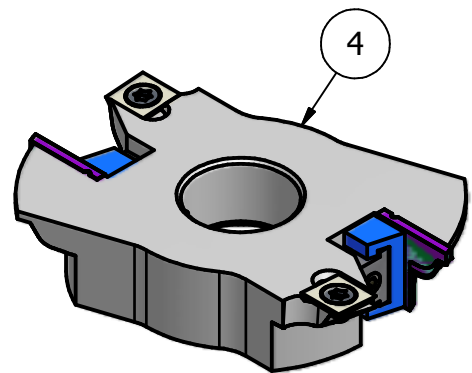
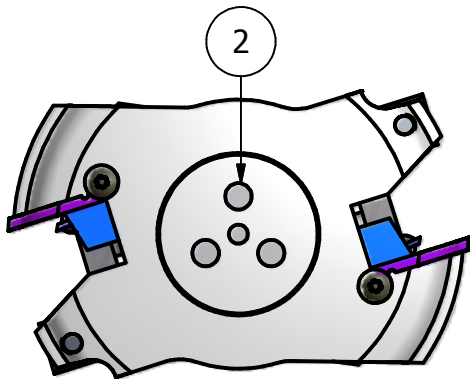
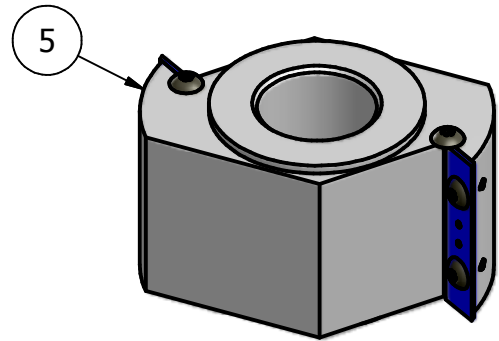
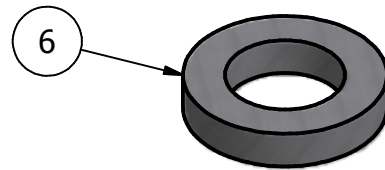
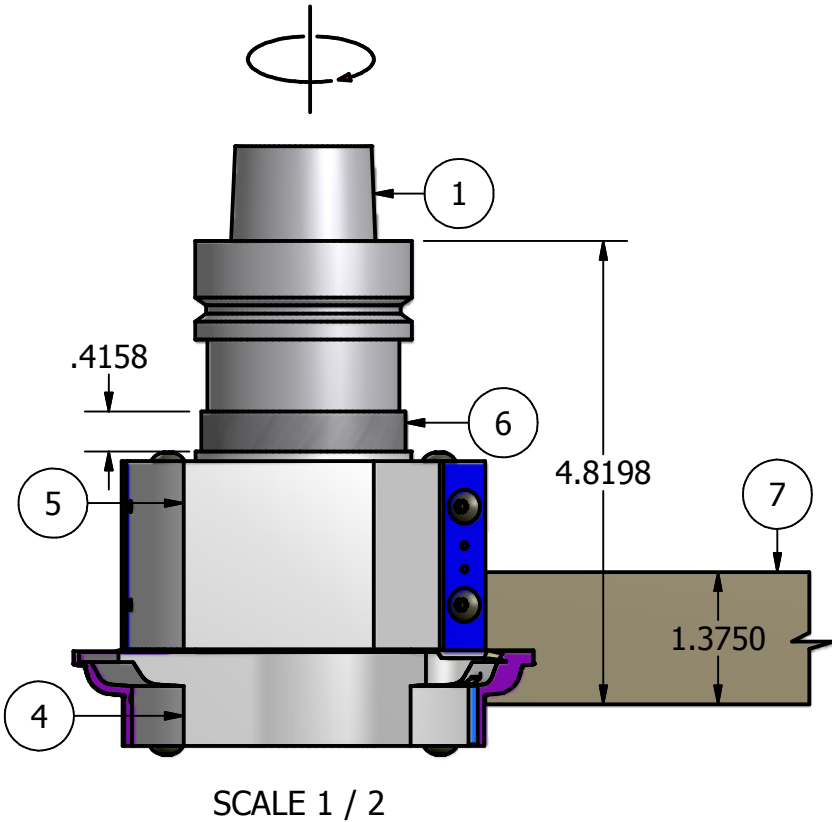
Cust P/N: Profile E for 2.25" wood

GEOMETRY	
2	Wing(s)
25	Hook
0	Shear

The minor diameter is 3.792"

Parts List		
ITEM	QTY	PART NUMBER
1	1	Lacey 1.250 toolholder
2	1	Lacey Toolholder Small Endcap
4	1	182-338 CW body B assembly
5	1	182-338 CW body A assembly
6	1	182-338 top spacer
7	1	Cope E 1.375" wood

Part lists for assemblies A & B are on another sheet



THIS DRAWING IS PROPERTY OF EW TOOLING, INC. AND MUST NOT BE USED IN ANY WAY DETRIMENTAL TO OUR INTERESTS

182 Hall Manufacturing
Lacey Door & Millwork

E.W. TOOLING, INC.

Cutting tools for the woodworking industry

Approved by: _____

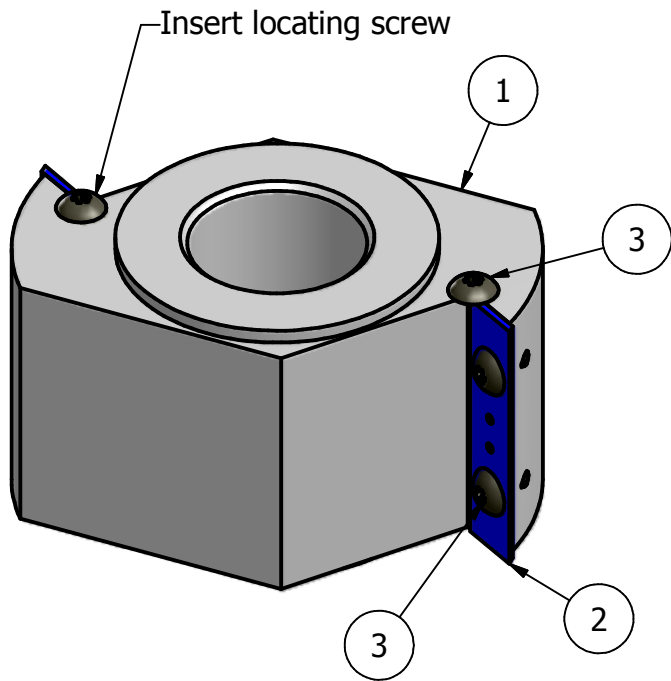
Originate: 10/27/09

Last edit: 12/8/09

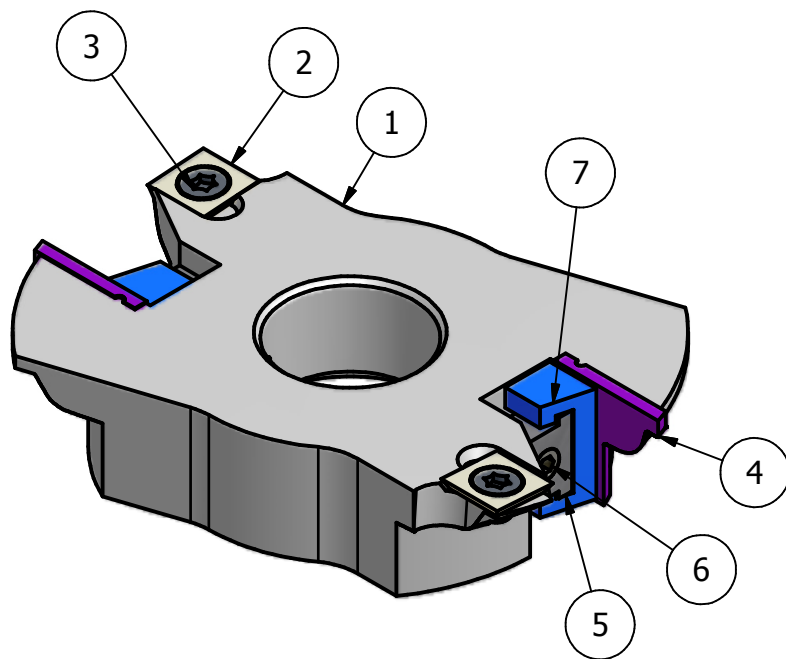
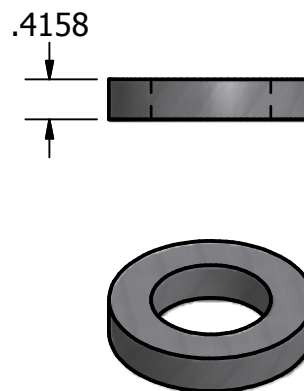
EW P/N: 182-338

Tips: Carbide inserts

Cust P/N: Profile E for 1.375" wood



Parts List		
ITEM	QTY	PART NUMBER
1	1	182-338 CW body A
2	2	50 x 12x 1.5 35deg
3	6	3.5 mm X 6mm BH



Parts List		
ITEM	QTY	PART NUMBER
1	1	182-338 CW body B
2	2	14x14x2
3	2	6x10-Flat Head Screw Mod Lght
4	2	182-339 Profile E insert
5	2	EW #1 clamp
6	2	3125x24x1 clamp screw
7	2	EW #1 wedge
8	2	3.5 mm X 6mm BH

#8 is the insert locating screw on the bottom of the body

THIS DRAWING IS PROPERTY OF EW TOOLING, INC. AND MUST NOT BE USED IN ANY WAY DETRIMENTAL TO OUR INTERESTS

182 Hall Manufacturing
Lacey Door & Millwork
E.W. TOOLING, INC.
Cutting tools for the woodworking industry

Approved by: _____

Originate: 10/27/09

Last edit: 11/19/09

EW P/N: 182-338

Tips: Carbide inserts

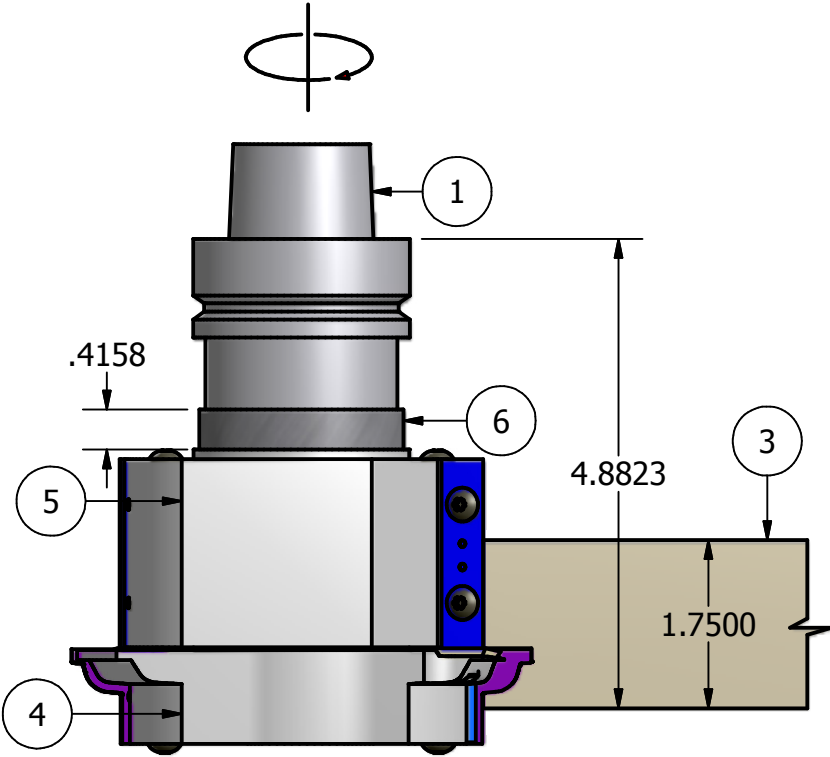
Cust P/N: Profile E for 1.375", 1.75" & 2.25" wood

GEOMETRY	
2	Wing(s)
25	Hook
0	Shear

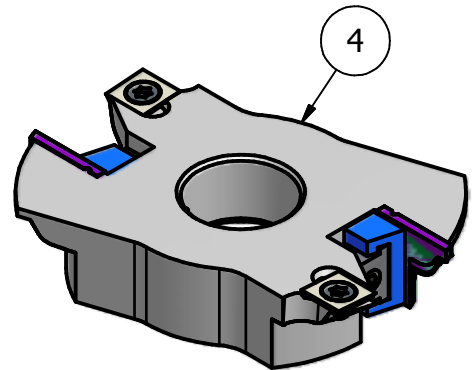
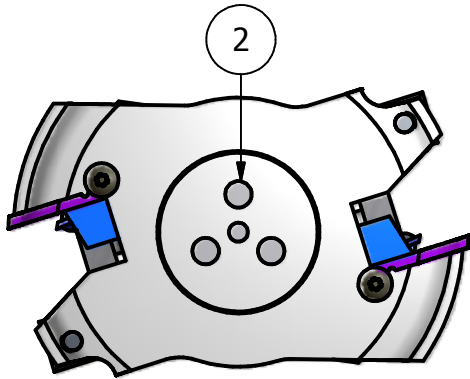
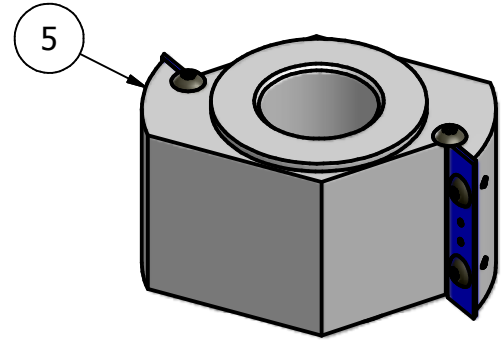
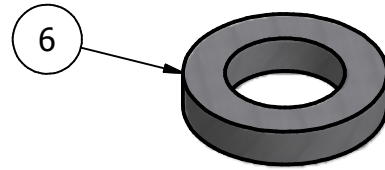
The minor diameter is 3.792"

Parts List		
ITEM	QTY	PART NUMBER
1	1	Lacey 1.250 toolholder
2	1	Lacey Toolholder Small Endcap
3	1	Cope E 1.75" wood
4	1	182-338 CW body B assembly
5	1	182-338 CW body A assembly
6	1	182-338 top spacer

Part lists for assemblies A & B are on another sheet



SCALE 1 / 2



THIS DRAWING IS PROPERTY OF EW TOOLING, INC. AND MUST NOT BE USED IN ANY WAY DETRIMENTAL TO OUR INTERESTS

182 Hall Manufacturing
Lacey Door & Millwork

E.W. TOOLING, INC.

Cutting tools for the woodworking industry

Approved by: _____

Originate: 10/27/09

Last edit: 12/8/09

EW P/N: 182-338

Tips: Carbide inserts

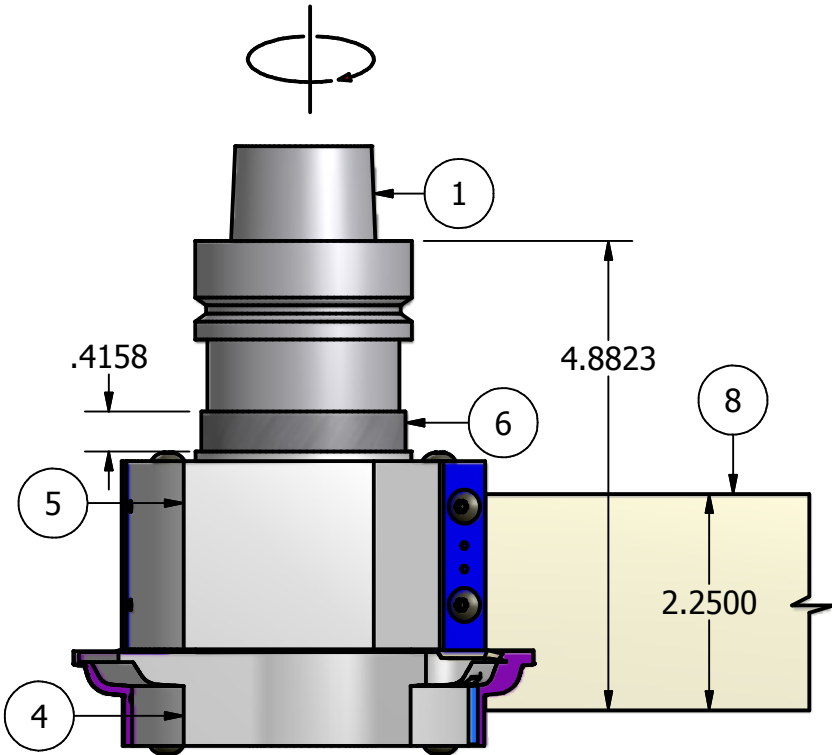
Cust P/N: Profile E for 1.75" wood

GEOMETRY	
2	Wing(s)
25	Hook
0	Shear

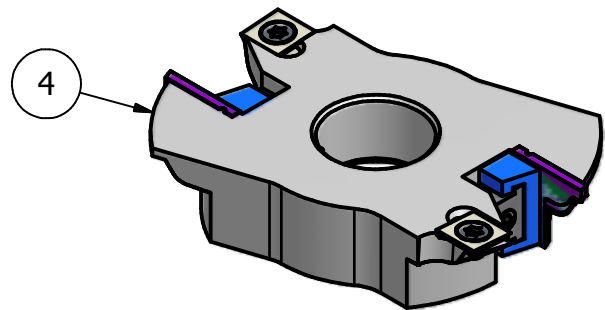
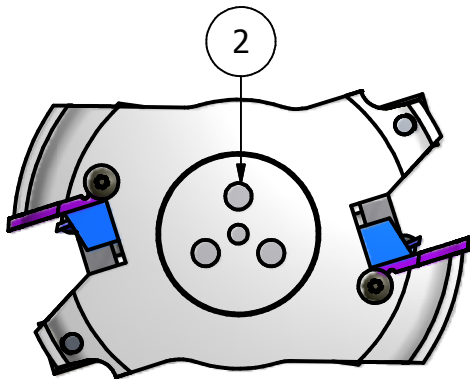
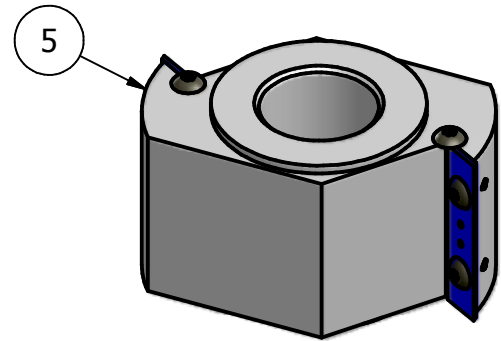
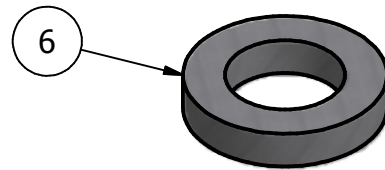
The minor diameter is 3.792"

Parts List		
ITEM	QTY	PART NUMBER
1	1	Lacey 1.250 toolholder
2	1	Lacey Toolholder Small Endcap
4	1	182-338 CW body B assembly
5	1	182-338 CW body A assembly
6	1	182-338 top spacer
8	1	Cope E 2.25" wood

Part lists for assemblies A & B are on another sheet



SCALE 1 / 2



THIS DRAWING IS PROPERTY OF EW TOOLING, INC. AND MUST NOT BE USED IN ANY WAY DETRIMENTAL TO OUR INTERESTS

182 Hall Manufacturing
Lacey Door & Millwork

E.W. TOOLING, INC.

Cutting tools for the woodworking industry

Approved by: _____

Originate: 10/27/09

Last edit: 12/8/09

EW P/N: 182-338

Tips: Carbide inserts

Cust P/N: Profile E for 2.25" wood