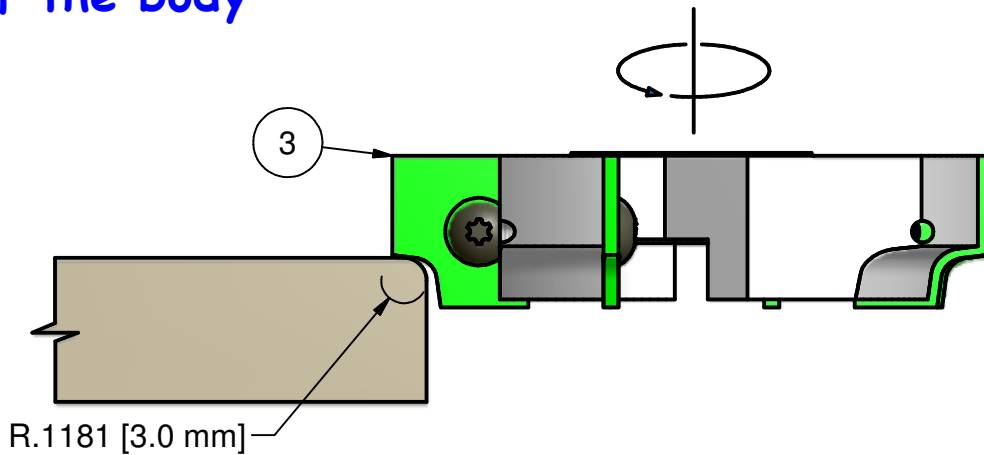
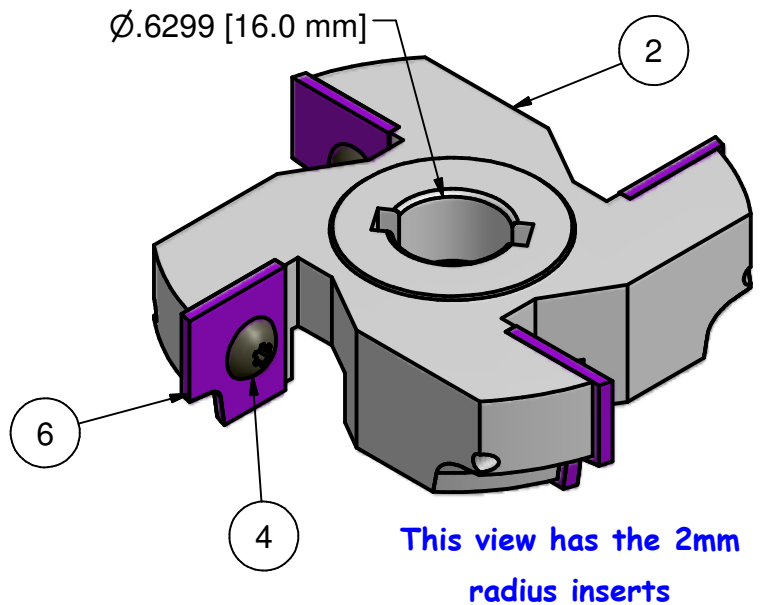
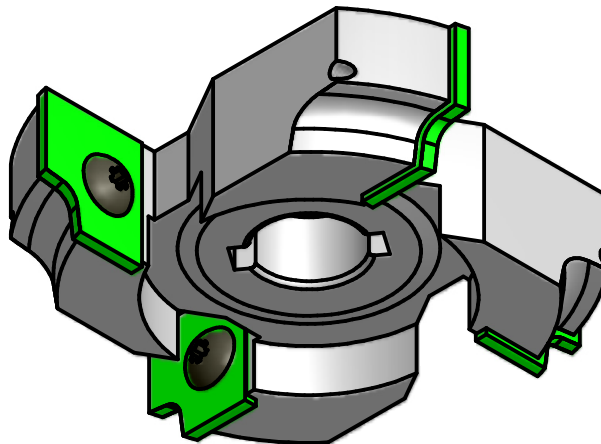


Parts List		
ITEM	QTY	PART NUMBER
2	1	182-382 body
3	4	182-383 R3mm insert
4	4	3.5 mm X 6mm BH
6	4	182-384 R2mm insert

Inserts need to be placed flush with the top edge of the body



GEOMETRY	
4 Wing(s)	
15° Hook	
0° Shear	
Minor Diameter	2.759"
Major Diameter	3.197"



THIS DRAWING IS PROPERTY OF EW TOOLING, INC. AND MUST NOT BE USED IN ANY WAY DETRIMENTAL TO OUR INTERESTS

182 Hall Manufacturing Solutions

E.W. TOOLING, INC.

Cutting tools for the woodworking industry

Approved by: _____

Originate: 5/4/10

Last edit: 5/4/10

EW P/N: 182-382

Tips: 20 X 20.5 X 2mm Carbide inserts

Cust P/N: