

Reduction Sleeves for ETP Toolholders

The reduction sleeves are designed to fit with the ETP Toolholders type G2 and PENCIL.

They are specially suited for high precision clamping of cylindrical tool shanks.

Benefits and features

- **Accurate precision:**
High runout accuracy $< 3 \mu\text{m}$.
- **High flexibility:**
Clamping of different tool shank diameters. 12, 20, 25 and 1/2", 3/4", 1".
- **Power increase:**
When using reduction sleeves the transmittable torque is increased.

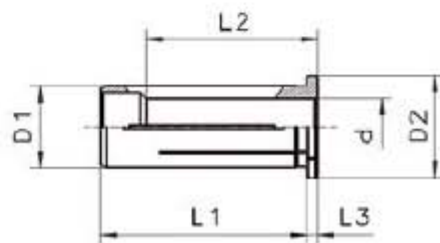


Outer-Ø of reduction sleeve corresponds to the type.

HS12 = Ø 12 mm

HS20 = Ø 20 mm

HS25 = Ø 25 mm



Reduction Sleeves HS 3/4"

HS 3/4" / 1/8"	.1250"	R1919.03182	.750"	25	50	28	4
HS 3/4" / 3/16"	.1875"	R1919.04762	.750"	25	50	28	4
HS 3/4" / 1/4"	.2500"	R1919.06352	.750"	25	50	36	4
HS 3/4" / 5/16"	.3125"	R1919.07942	.750"	25	50	37	4
HS 3/4" / 3/8"	.3750"	R1919.09522	.750"	25	50	36	4
HS 3/4" / 7/16"	.4375"	R1919.11112	.750"	25	50	40	4
HS 3/4" / 1/2"	.5000"	R1919.12702	.750"	25	50	45	4
HS 3/4" / 9/16"	.5625"	R1919.14292	.750"	25	50	45	4
HS 3/4" / 5/8"	.6250"	R1919.15882	.750"	25	50	48	4