

## Duo – Two Spindle Aggregate Head



Aggregate heads are used for:

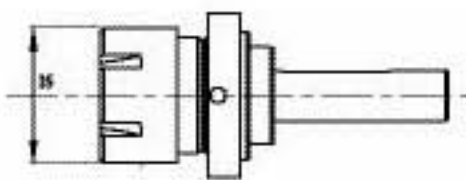
- Speeding operations by combining tasks
- Reducing the number of tool changes needed
- Creating custom profiles and mortises
- Faster sizing and grooving (saw blade)

Follow these steps to place an order:

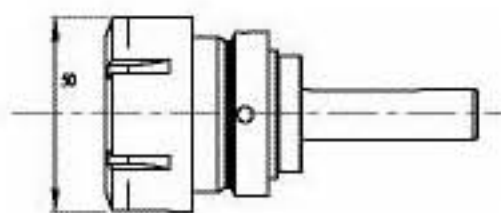
1. Determine your CNC machine spindle type.
2. Make sure the aggregate output is correct for your application.
3. Choose your outputs based on the number of spindles the aggregate head offers.

HSK63F spindle shown. HSK63E, ISO30, ISO40, BT30, and BT35 spindles are also available. Torque arms are available for other spindle types. Call for information.

### Output Options (for Mono and Duo):

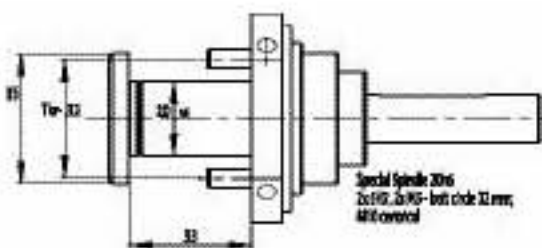


M5 - ER 25 Collet

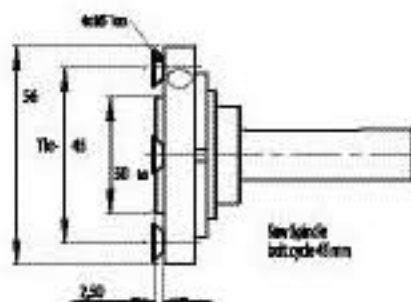


R6 - ER 32 Collet

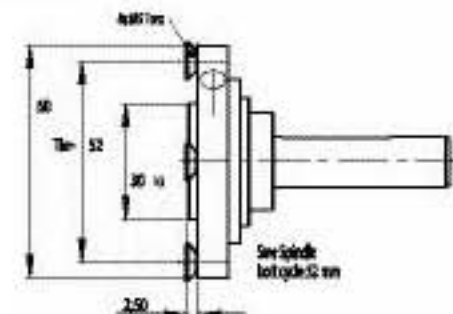
Application	Boring, routing, and sawing
Spindle Speed Max.	10,000 RPM
Tool Speed Max.	15,000 RPM
Rotation	Aggregate can be rotated 360°
Gear Ratio	1:1.48
Gear Reduction*	1:0.676 (*optional feature)
Maximum Torque	15 ft. lbs.
Maximum Temp.	185° F
Outputs Available	M5, R6, S1, S2, P1, P2, P3, P4, 05



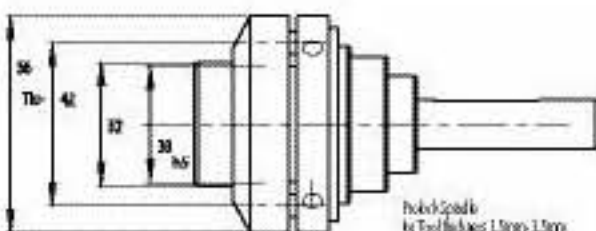
05 - Special Spindle



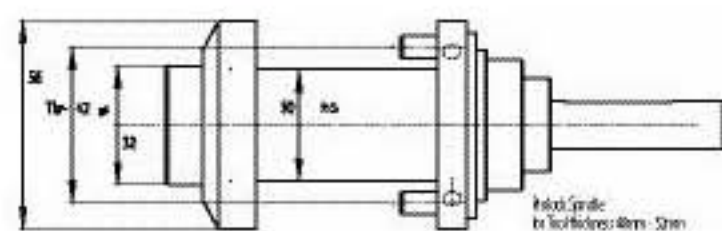
S1 - Saw Blade 30mm x 45mm



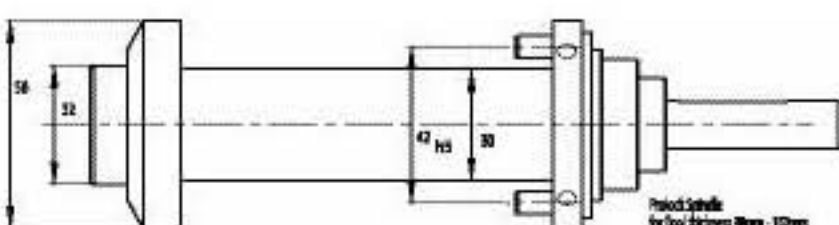
S2 - Saw Blade 30mm x 52mm



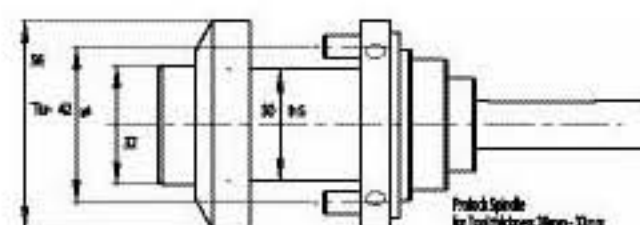
P1 - Prolock Spindle



P2 - Prolock Spindle



P3 - Prolock Spindle



P4 - Prolock Spindle