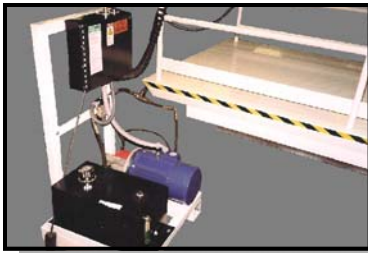


Scissor Lifts

Solutions Through Creative Innovation

**Enhance Operator Performance &
Reduce Operator Fatigue**



Hydraulic System & Electrical Panel.



Board Clamp—Can be positioned on any side.



Additional Features & Options:

- Removable bundle stand-off
- Roller-Top Conveyors
- Rotational-Top Conveyors



InBoard Hydraulic Systems
110 Volt or 3 Phase



Air Supply & 110Volt Outlet convenient for extra operator performance.



Operator Foot Switch

Ph: 620.724.6220
Fax: 620.724.4653

Email: info@thomasmanufacturing.com
Website: thomasmanufacturing.com

Standard Specifications

Load Capacity:	2,000lbs—16,000lbs depends on model
Physical Dimensions:	Min. 30" x 60"; Max. depends on model
Deck:	Smooth Plate Steel
Vertical Travel:	Depends on Overall Dimensions of Top
Maximum Lift Height:	Depends on Overall Dimensions of Top
Retracted Height:	9-3/4" Standard—Depends on model
Control:	Foot Switch with Cover (OSHA approved)
Motor HP:	2HP-5HP
Voltage:	220V or 440V 3-Phase

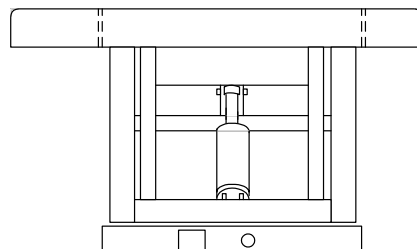
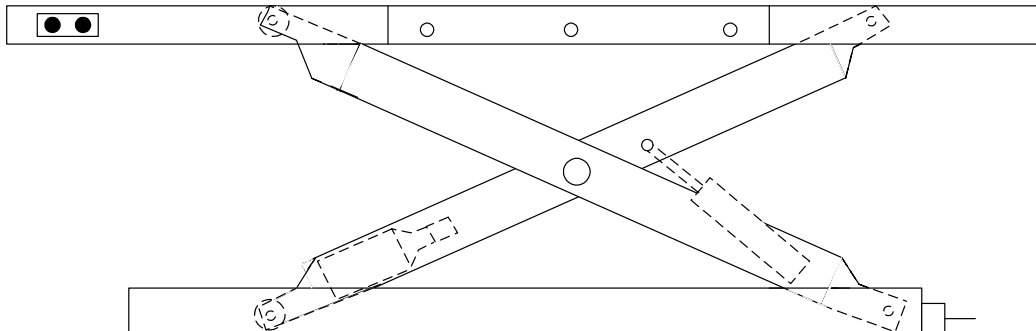
Optional:

- Pendant Control
- 110Volt-Single Phase
- PhotoEye for Positioning
- Hand Rails
- Bundle StandOff-Removable
- Diamond Plate Deck
- Roller Top
- TurnTable Top
- Pneumatic Board Clamp
- 110V Outlet & Air Supply
- Toe Guard Apron
- Custom Sizes

Scissor Lift with Guards



Footprint not to scale.



Distributed by: