

CutBak

Return Conveyors

Run Your Saw with One Operator

Solutions Through Creative Innovation



Receiver section showing infed roller and photoeye.



Adjustable Jack Legs



The MaxDrive system consists of a series of pulleys and rubber belts which drive the rollers from underneath. There are no urethane bands to weld.



CutBak Conveyor

“CutBak” Costs, But Not Features with THOMAS

- **PLC-Controlled**
- **Teflon-Lined Steel Slides**—Move parts easily and are durable
- **Variable-Speed Rollers**—Roller speed can match speed of processing machine
- **Portable Remote Control**—Move as needed
- **Swing-out Section with Lockable Casters**

Ph: 620.724.6220
Fax: 620.724.4653

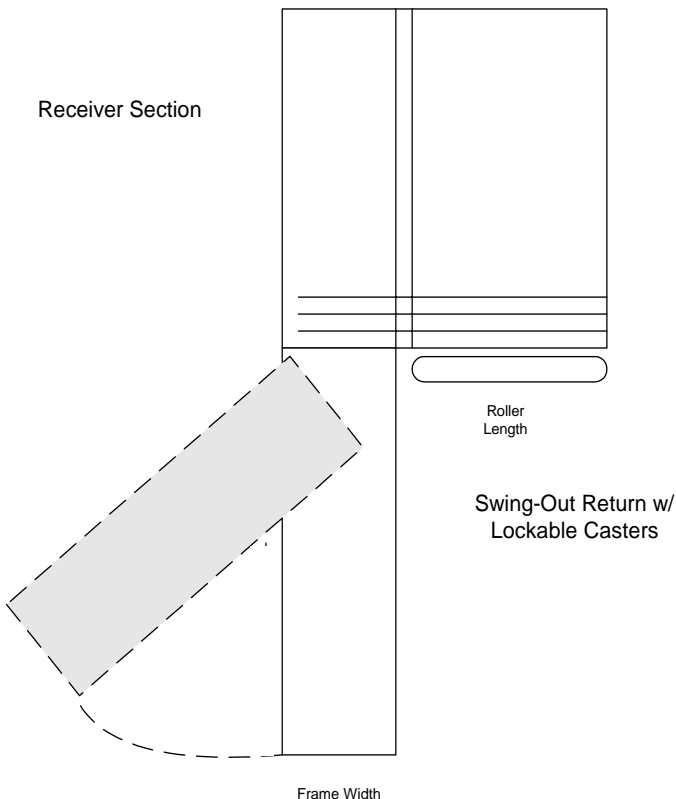
Email: info@thomasmanufacturing.com
Website: thomasmanufacturing.com

THOMAS
MANUFACTURING

Standard Specifications

- ❖ MaxDrive System—No welded bands on rollers
- ❖ InFeed Roller
- ❖ Variable-Speed Drive
- ❖ 1.9" or 2.5" Dia. Steel Rollers
- ❖ Roller lengths—vary from 17" to 61"
- ❖ Photoelectric Sensor
- ❖ ½" Dia Urethane Cord Reinforced Transfer Belts
- ❖ Teflon-lined Steel Slides
- ❖ Remote Control—Standard Operators: START-STOP-SPEED
- ❖ PLC—Controlled
- ❖ Hinged Swing-Out Return, or Pinned Roll-Away
- ❖ 32"-42" Standard Height; Receiver-Adjustable Legs/ Return-Lockable Casters
- ❖ Voltage & Amp Requirements: 230V/3Ph-10 amps 460V/3Ph-6 amps
- ❖ 1HP or 2HP Motor & Drive Depending on Conveyor Size
- ❖ Air Requirement: 60lbs @ 10CFM

Optional: 220 Single Phase
Custom Sizes and Configurations



MACHINE OPERATION:

- 1) Photoeye detects the trailing edge of parts coming from saw. This causes the receiver rollers to lower.
- 2) Urethane belts or acetal chains move the parts sideways to the return section.
- 3) After the part leaves the receiver section, the rollers raise and the cycle is repeated.

Distributed by: